

Belmont University

## Belmont Digital Repository

---

OTD Capstone Projects

School Of Occupational Therapy

---

Spring 4-11-2024

### Providing Sensory Integration Education and Transition Tools for the Tennessee Baptist Children's Homes

Thuy-Duong D. Huynh

Belmont University, tdhuynh98@gmail.com

Follow this and additional works at: <https://repository.belmont.edu/otdcapstoneprojects>



Part of the [Occupational Therapy Commons](#)

---

#### Recommended Citation

Huynh, Thuy-Duong D., "Providing Sensory Integration Education and Transition Tools for the Tennessee Baptist Children's Homes" (2024). *OTD Capstone Projects*. 187.

<https://repository.belmont.edu/otdcapstoneprojects/187>

This Poster is brought to you for free and open access by the School Of Occupational Therapy at Belmont Digital Repository. It has been accepted for inclusion in OTD Capstone Projects by an authorized administrator of Belmont Digital Repository. For more information, please contact [repository@belmont.edu](mailto:repository@belmont.edu).



# Providing Sensory Integration Education and Transition Tools for the Tennessee Baptist Children's Homes



Danielle Huynh, OTD/S  
Expert Mentor: Rees Greenman, LMSW  
Faculty Mentor: Katy Schmidt, OTR/L

## TBCH

**Mission**  
“Tennessee Baptist Children’s Homes ministers the love of Jesus Christ to children and families in crisis.”

**Vision**  
“Tennessee Baptist Children’s Homes envisions and strives to be a ministry to children and families that leads them to become whole persons in Christ through faith, hope, and love.”

- TBCH Residential Program**
- Children are voluntarily placed at TBCH by their families
  - Collaborative effort to take care of children and support parents with the goal of reconciliation
  - When on campus, children rotate between their host home (2 weeks) and respite home (1 week)
  - Home visits - when the child gets to go home to their family for a visit (usually a couple of days for a holiday or over a weekend)
  - Day visits – when a child’s family comes to Brentwood to pick up the child from campus and spend the day together

## Identified Needs

**Sensory Integration Education – Need 1**  
The workers at TBCH identified that “They need more information and training on how to work with children who have sensory integration difficulties.”

**Transitions – Need 2**  
Besides entering and exiting the program, the children go through two main sets of transitions. (1) The first is rotations between host home and respite home, (2) and the second is when the child goes off campus to visit their family at home.

## Goals

- Agency Objectives**
- Create resources for families when they come to the Brentwood area for weekend visits
  - Develop educational material and resources for the house parents about Sensory Integration
  - Develop strategies to decrease anxiety associated with home visits
- Personal Objectives**
- Enhance my service and leadership skills
  - Enhance my professional presentation skills

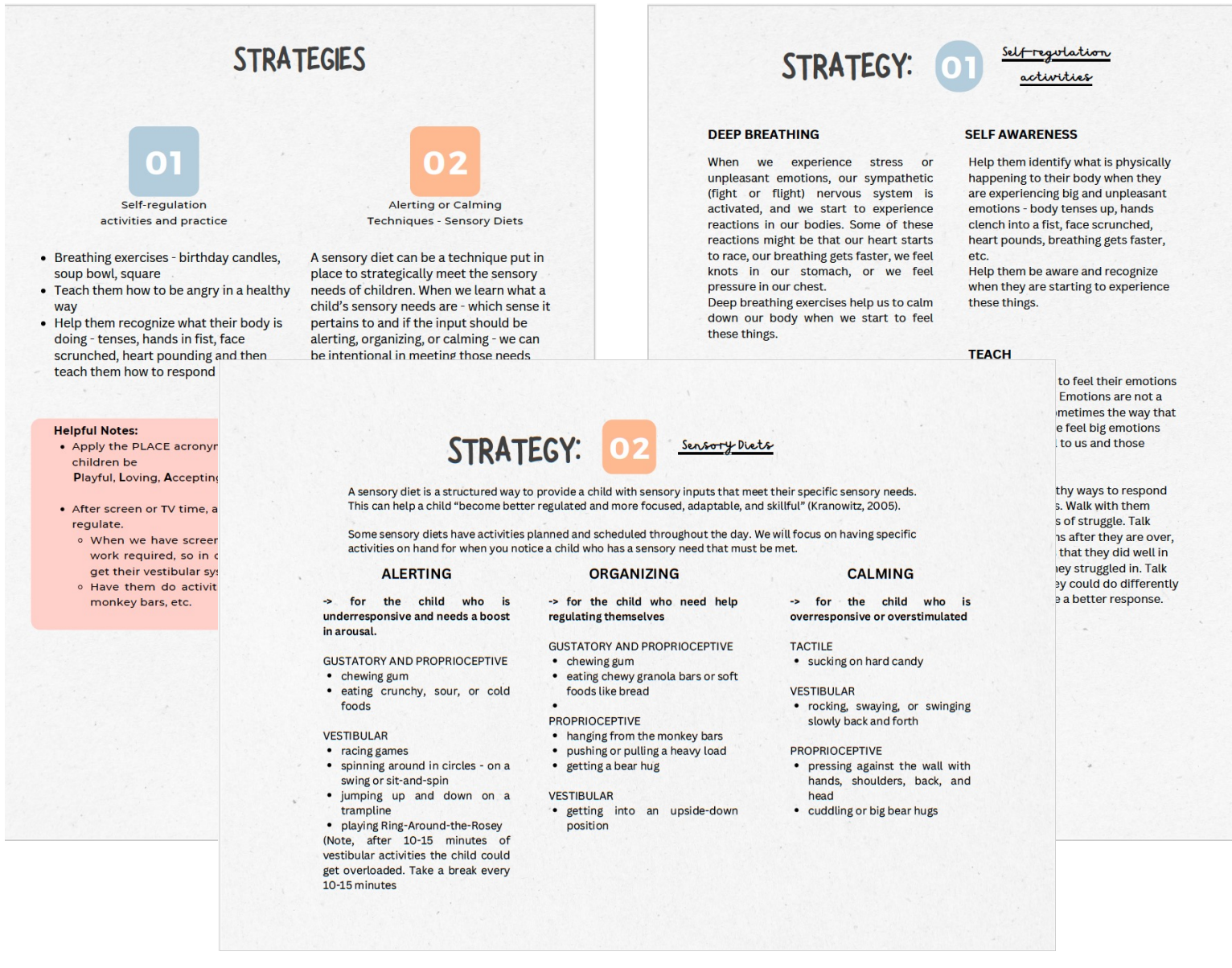
## Outcomes

### Addressing Need 1

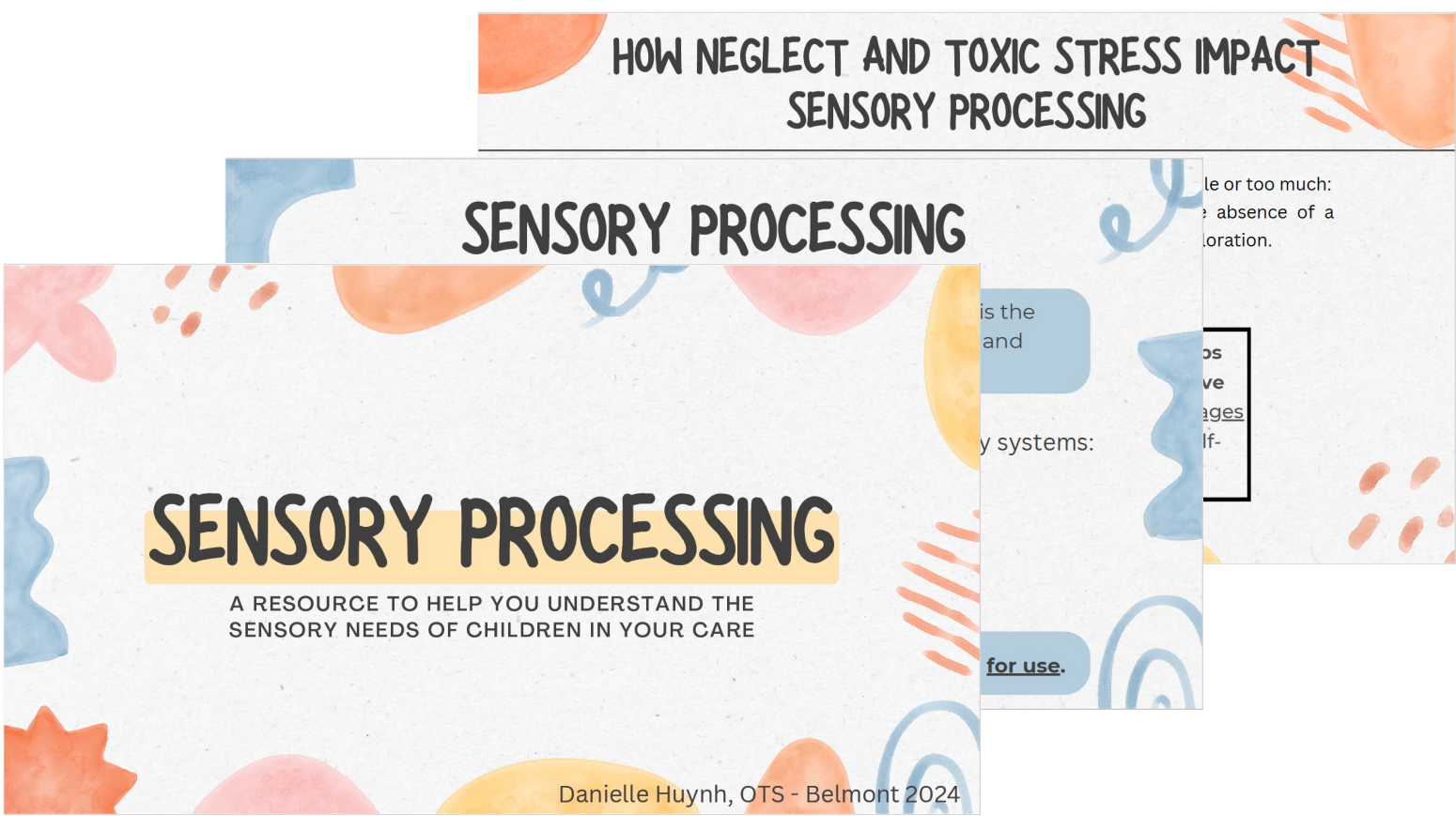
#### Sensory Integration

- 1) Identifying the Need**  
After conducting interviews, I learned that:
- The house parents had a very basic understanding of sensory integration (SI).
  - They needed training to gain a good foundational and comprehensive understanding of SI.
  - More specialized training on specific sensory needs can follow after a solid base of knowledge is established.

- 2) Finding the Right Fit To Meet the Need**  
Create a training that teaches the house parents foundational knowledge about SI.
- What’s happening in the body
  - What different kinds of sensory integration difficulties are there
  - How do they present themselves



Educational Booklet Sample



PowerPoint Presentation Samples

- 3) Meeting the Need**  
A presentation was created that addressed the following topics:
- What is Sensory Processing
  - Understanding the Senses
  - What are sensory processing difficulties
  - What are the primary patterns of sensory processing difficulties
  - Types of learning (and how SI difficulties impact learning)
  - The development of sensory processing
  - Neglect and toxic stress’s impact on sensory processing
  - Strategies to address sensory processing difficulties
  - Being aware of your own sensory needs as you care for children

An educational booklet was created as a companion resource for easy information access and more in-depth information.

### Addressing Need 2

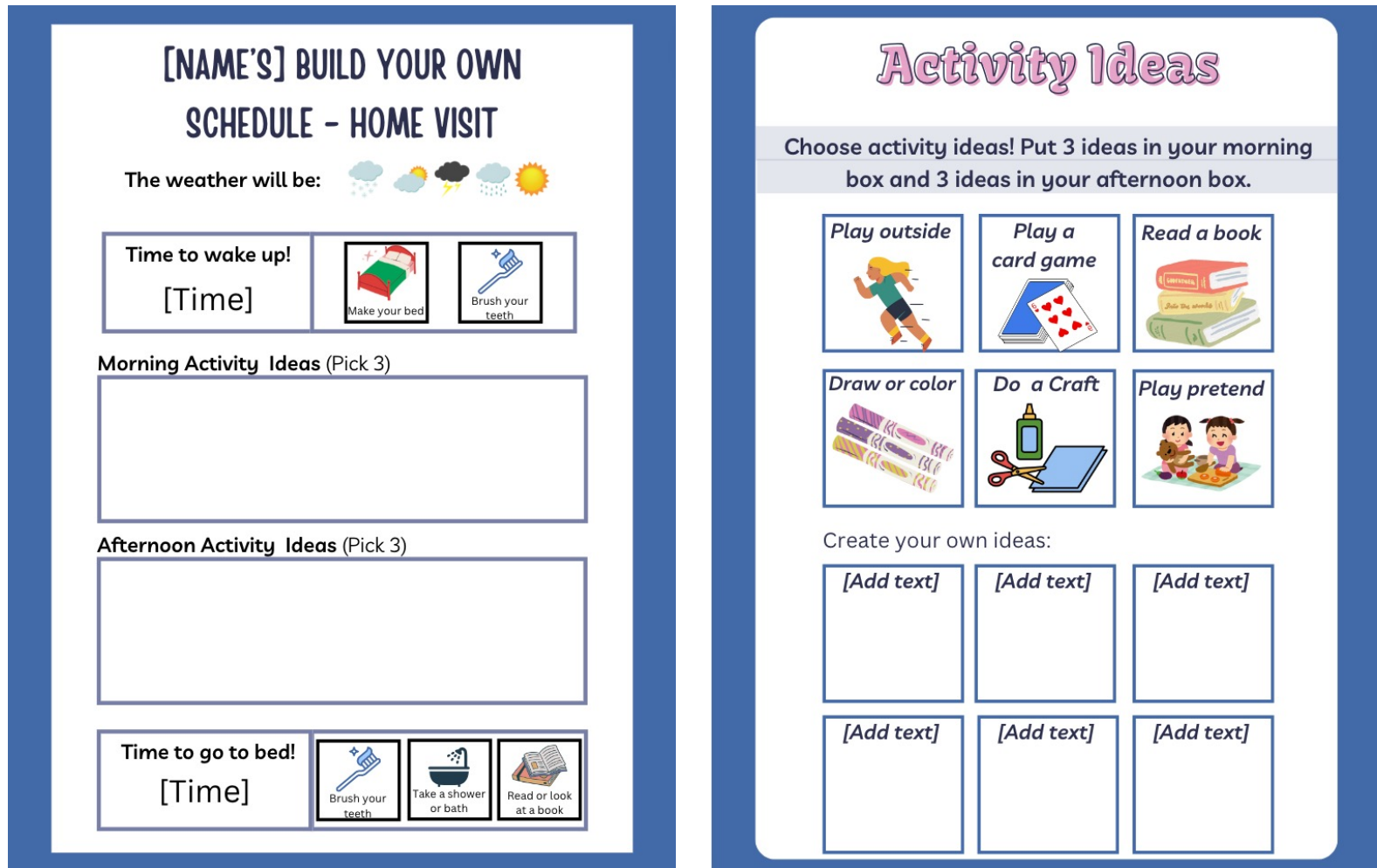
#### Activity Guide

This activity guide was created as a resource for families when they come to Brentwood for day visits with their child in residence at TBCH.



#### Home-Visit Schedule

- The lack of structure and routine during home visits causes the children to be apprehensive and makes transitions difficult.
- A simple rough schedule with key items such as wake-up time, bedtime, and a few suggested activities to do during the day can help provide structure.
- Allowing them to build structure into their home visits will help ground them and ease the stresses of these transitions.



## Acknowledgments

- A special thank you to Rees Greenman, my expert mentor, for your support, eagerness to help, and for always being ready with a smile and a word of encouragement.
- Thank you, Dr. Katy Schmidt, for being ever-wise and encouraging.
- Thank you, house parents, residents, and case managers, for welcoming me into your community with open arms and an eagerness to learn.
- Thank you, TBCH, for this opportunity to learn, serve, and grow.

- Take it a Step Further – ideas for future projects**
- Development of an anger management program
  - Sensory regulation and self-regulation education and training for residents
  - Development of sensory diets for residents