



Milestones



1936

CATHERINE E. MORRISON



Ex Libris

1 9 3 6
MILESTONES

VOLUME TWENTY-TWO

*Published by the
Students of*

**WARD-BELMONT
SCHOOL**

NASHVILLE, TENNESSEE

MILESTONES STAFF, 1936

MARTHA KIGER.....	<i>Editor</i>
ANNA MAY MOUL.....	<i>Associate Editor</i>
MARGARET OZEE.....	<i>Business Manager</i>
MARY EVELYN JENSEN.....	<i>Art Editor</i>
MARY LEE WILLIAMS.....	<i>Assistant Art Editor</i>
MOSELLE WORSLEY.....	<i>Photographic Editor</i>
ELLEN BOWERS.....	<i>Day Student Editor</i>
PATTIE HOWELL.....	<i>Feature Editor</i>
BARBARA LEAKE.....	<i>High School Representative</i>

TABLE OF CONTENTS



CAMPUS VIEWS
ADMINISTRATION
CLASSES
ACTIVITIES
ATHLETICS
CAMPUS LIFE
ORGANIZATIONS

FOREWORD




JUST as a diary of Mistress Belle Ware records the activities, achievements, and ambitions of her years on the campus, so do we, the MILESTONES staff, offer this book, hoping to make immortal the love and memories we hold for our school.

IN MEMORIAM



EVELYN MCCALL

DEPENDABILITY, SINCERITY, AND FAITHFULNESS



Digitized by the Internet Archive
in 2010 with funding from
Lyrasis Members and Sloan Foundation

<http://www.archive.org/details/milestones1936ward>



To

MISS CATHERINE E. MORRISON

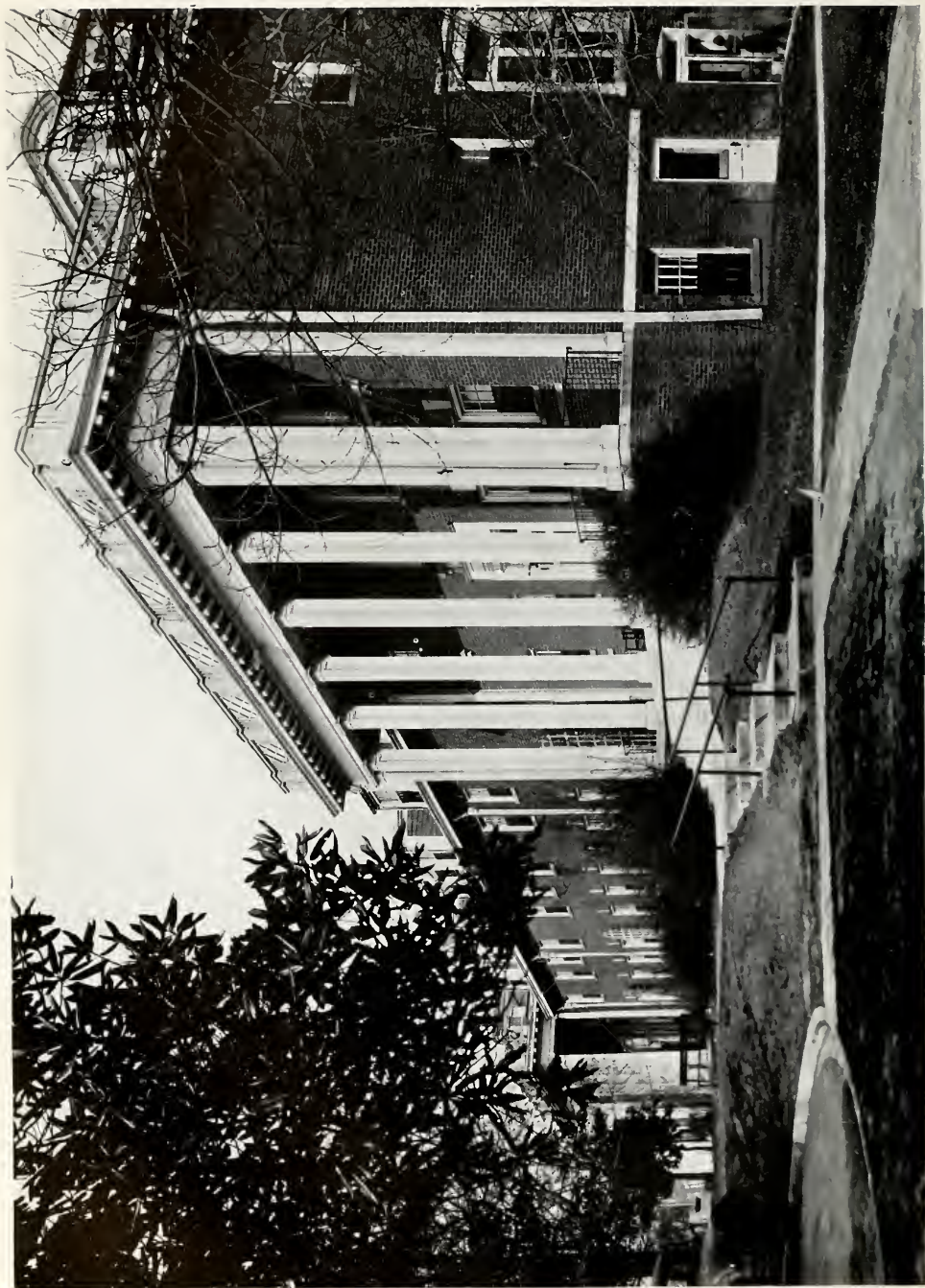
Who completes our diary by her unfailing interest
and by her inspiration to the finest
ideals.



"Big Ac," with White Columns Shining, Is the Center of Beauty as Well as Enlightenment



"Club Village"—Beauty, Charm, and Serenity; Yet Is the Seat of All Ward-Belmont Hilarity



The Dormitories, Where Everlasting Friendships Are Created



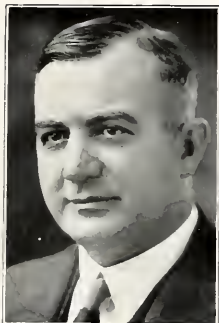
The Regal Atmosphere of "Rec Hall" Retains the Charm of the Old South



The Singing Tower of Ward-Belmont Calls Us Back Each Year



Administration



DR. JOHN WYNNE BARTON
President

It is always a pleasure to greet the Ward-Belmont family through the medium of the MILESTONES. Another year has passed. We trust that each of you may have had something very positive added to your life. May the pages of this book, which will be of valued assistance to your memories in years to come, never lose their interest for you.

JOHN WYNNE BARTON.



MR. ANDREW B. BENEDICT
Vice President



MISS EMMA I. SISSON
Dean of Residence



DR. JOSEPH E. BURK



MISS ANNIE C. ALLISON

At this time of the year thoughts of parting are inevitable. Yet they need not be sad thoughts, since most of you will be back again to continue your formal education, and the rest of you—you graduates of the high school and the college—will be joyously carrying the ideals of Ward-Belmont into realization elsewhere.

The teaching staff of both high school and college wish for the former group a glorious vacation and for the latter "Happy Landings."

JOSEPH E. BURK, Dean of Faculty.

ANNIE C. ALLISON, Principal of High School.



Administration

JOHN WYNNE BARTON, M.A., LL.D.
President

ANNIE CLAYBROOKE ALLISON, B.A., M.A.
Principal of High School

ANDREW BELL BENEDICT
Vice President and Business Manager

HENRIETTE RICHARDSON BRYAN
Registrar

EMMA I. SISSON
Dean of Residence

W. V. FLOWERS
Secretary

JOSEPH E. BURK, M.A., Ph.D.
Dean of Faculty

E. J. SNYDER
Bursar

ELIZABETH PHILLIPS, B.S.
Sponsor Student Publications
Alumnae Secretary

Library

FRANCES E. CHURCH, B.A., M.S. in L.S.
Librarian

LOUISE SAUNDERS

MARY LOUISE OGDEN, B.A., B.S. in L.S.

Home Department

EMMA I. SISSON
Dean of Residence

MINNIE POWELL
BOOKER MASON ROSE
CLARA B. TATE
WILLIE B. WEEDON
Hostesses and Assistants

MARY S. CHARLTON
FRANCES ESTES
LILLIE GUNN HALL
VIRGINIA HARRIS

LILLIAN LOWER, R.N.
MARY LILLIAN DRYDEN, R.N., B.S.
Graduate Nurses

GEORGIA RYMAN JACKSON
MARY LEE JETER
MARION DOUGLAS MERIWETHER
MARY NEAL
BONA A. NICHOLLS

ROSA W. CLAY
Dietitian

Junior College and High School Faculty

ANNIE CLAYBROOKE ALLISON
Latin
B.A., M.A. George Peabody College for Teachers;
Graduate Work, University of Chicago

JOSEPH E. BURK
Education
B.A., Southwestern University; M.A., Southern
Methodist University; Ph.D., New York
University

LOIS BALCOM
Dancing
Graduate, Boston School of Physical Education; A.B.,
George Washington University

GERTRUDE CASEBIER
History
B.A., Western Kentucky State Teachers College; M.A.,
Vanderbilt University



MARTHA ANNETTE CASON

Latin

B.A., University of Chicago; M.A., Columbia University;
Further Graduate Study, Columbia University

HELEN KENNARD CASTELLANO

Spanish

B.A., Brown University; M.A., Middlebury College

MARY ELIZABETH CAYCE

Physical Education; Assistant in Athletics

Graduate, Ward-Belmont School; B.S., George Peabody
College for Teachers

FRANCES E. CHURCH

Library Methods

B.A., Missouri State Teachers College; Graduate Student,
Illinois University; M.S. in L.S., Columbia
University

BLANCHE HENRY CLARK

History

B.A., M.A., Duke University; Further Graduate Study
Vanderbilt University

MARY DEAN CLEMENT

Mathematics

B.A., Wellesley College; M.A., Vanderbilt University

MARGARET LEACH COOK

French

B.A., Agnes Scott College

MARIAN CRAWFORD

Latin

B.A., Randolph-Macon Woman's College; M.A.,
Southern Methodist University

THOMAS B. DONNER

Spanish

B.A., East Texas Teachers College; M.A., Southern
Methodist University

FRANCES EWING

Economics

Graduate, Ward-Belmont School; B.A., M.A., Vanderbilt
University

W. V. FLOWERS

Commercial Law

Member, Nashville Bar

LUCIE L. FOUNTAIN

French

B.A., Barnard College

JESSIE LEE FRENCH

Biology

B.S., M.A., George Peabody College for Teachers

FLORENCE F. GOODRICH

Physical Education and Physiology

B.S., Hillsdale College; M.S., University of Michigan;
Graduate Student, Michigan State College for
Teachers, Merrill-Palmer School

LOUISE GORDON

Art

Graduate of the New York School of Fine and Applied
Arts

HELEN CARTWRIGHT GRIZZARD

Chemistry

Graduate, Ward-Belmont School; B.A., Vanderbilt
University

MARGARET FRIERSON HALL

Assistant in Gymnasium

VERA L. HAY

History

Ph.B., University of Chicago; Graduate Student,
Vanderbilt University

CORA HENDERSON

Secretarial Training

B.A., Southern College; M.A., George Peabody College
for Teachers

ALMA HOLLINGER

Biology

B.A., M.A., University of Michigan; Student, Michigan
Biological Station and Marine Biological Station,
Venice, California

W. H. HOLLINSHEAD

Chemistry

Ph.G., D.Sc., Vanderbilt University

MARGARET LOOFF

Foods and Nutrition

B.S., Graduate Student, Iowa State College

KATHARINE V. LYDELL

English

A.B., Wellesley College; Graduate Student
Vanderbilt University



NELLE MAJOR

Mathematics

B.S., George Peabody College for Teachers

RUTH BRIERLY MILLRING

Expression

B.A., Mount Holyoke College; M.A., Smith College;
Graduate, Curry School of Expression; Instructor,
Curry School of Expression

CATHERINE E. MORRISON

Director School of Physical Education

Diploma from Possee Gymnasium, Boston; Special Student,
Chaliff School, New York, and Columbia
University

CAMILLA NANCE

Riding

B.S., Sargent School of Boston University

MARY RACHEL NORRIS

Psychology

B.A., M.A., Bryn Mawr College; Further Graduate
Study, George Peabody College for Teachers
and Columbia University

BETTY O'DONNELL

Physical Education

Graduate, Ward-Belmont School; B.S., Sargent School
of Boston University

MARY LOUISE OGDEN

Library Methods

B.A., University of Tennessee; B.S. in L.S., University of
Illinois

MARTHA K. ORDWAY

English

Ph.B., University of Chicago; M.A., George Peabody
College for Teachers

FRANCES HELEN PARKER

German

B.A., Birmingham-Southern College; M.A., Vanderbilt
University

RUTH HOGAN PRATT

Clothing

B.A., Iowa State College; M.S., New York University

ANNA PUGH

English

B.A., University of Arkansas; M.A., University of
Chicago; Graduate Student, Columbia University;
Further Graduate Study, George Peabody
College for Teachers

ELLENE RANSOM

English

B.A., M.A., Vanderbilt University; Graduate Student,
Columbia University, Vanderbilt University,
and Yale University

LINDA RHEA

English and History

B.S., Vanderbilt University; M.A., Columbia University;
M.A., Vanderbilt University; Ph.D., Vanderbilt
University

OLIVE CARTER ROSS

English and Art History

B.A., University of Nashville; Graduate Student, Van-
derbilt University; M.A., Columbia University

BERTHA M. REUF

French

A.B., M.A., Vassar College; Diploma de Professeur de
Francais, Universite de Toulouse

THEODORA COOLEY SCRUGGS

English

B.A., Wellesley College; M.A., Vanderbilt University;
Further Graduate Study, Vanderbilt University

HIBERNIA SEAY

French

B.A., Randolph-Macon Woman's College; M.A., Duke
University; Diploma Superior en Etudes Francaises,
University of Nancy; Diploma en Cours de
Civilisation Francaise, Sorbonne; Further
Graduate Study, University of Chicago

MARY WYNNE SHACKELFORD

Director School of Art

Graduate, Art Academy of Cincinnati; Graduate, Pratt
Institute, Department of Fine and Applied Arts;
Special Student, New York School of Fine and
Applied Arts in New York and in Paris

ROBBIE ALLISON SHACKLEFORD

Mathematics

B.A., Vanderbilt University

VIRGINIA SMALL

Assistant in Biology

B.A., Butler University; M.A., University of Wisconsin;
Student in Medicine, Vanderbilt University

SUSAN S. SOUBY

English

B.S., M.A., George Peabody College for Teachers



PAULINE SHERWOOD TOWNSEND
Director School of Expression
 Graduate, New England Conservatory; Postgraduate,
 Boston School of Expression; Special Courses
 in New York, Chicago, and Boston

RUBY VAN HOOSER
Religion and Sociology
 B.A., Athens College; Graduate, Scarritt College for
 Christian Workers; Graduate Student, Univer-
 sity of Chicago; M.A., Columbia
 University

The Conservatory of Music

Department Heads

KENNETH ROSE, *Violin*

LAWRENCE H. RIGGS, *Musical Sciences*

FREDERICK ARTHUR HENKEL, *Organ*

SYDNEY DALTON, *Voice*

ROY UNDERWOOD, *Piano*

MARY VENABLE BLYTHE
Sight Playing and Piano

Graduate, St. Mary's Hall, San Antonio; Pupil of von
 Mickwitz and Harry Redman; Theoretical
 Courses in Southern Methodist Univer-
 sity, University of Colorado,
 University of South-
 ern California

FLORENCE N. BOYER
Voice

Student of Music in Oberlin College; Pupil of Signor
 Vananni in Italy; Pupil of Mesdames de Sales
 and Bossetti in Munich; Pupil of Oscar
 Seagle and de Reszke in Paris

SYDNEY DALTON
Director of Voice Department

L.Mus., Dominion College of Music, Montreal; M.Mus.,
 Cincinnati Conservatory of Music; Pupil of David
 Bispham, Max Heinrich, and J. H. Duval;
 Studied Piano with Raphael Joseffy; Com-
 position with Rubin Goldmark and
 Frederick Schlieder

MARY DOUTHIT
Piano

Graduate, Ward-Belmont, School of Music; Pupil of
 Lawrence Goodman, Harold von Mickwitz, and
 Sigmund Stojowski

FREDERICK ARTHUR HENKEL
Director of Pipe Organ

Graduate, Metropolitan College of Music; Student,
 Cincinnati College of Music; Pupil of Stein-
 brecher, Andre, Scerling, and Durst

FRANCES HELEN PARKER

Harp

B.A., Birmingham-Southern College; M.A., Vanderbilt
 University; Study, Eastland School of Music and
 Cincinnati Conservatory of Music; Private
 Lessons in Vienna; Pupil in Master Class
 of Carlos Salzedo

LAWRENCE H. RIGGS

Director Department of Musical Sciences

B.A., Beloit College; Rhodes Scholar at Oxford Univer-
 sity, England; Summer Courses, Chicago Musical
 College, Northwestern University, School of
 Music, and American Institute of Normal
 Methods; Graduate of American In-
 stitute of Normal Methods

HAZEL COATE ROSE

Piano

Pupil of William H. Sherwood, Glenn Dillard Gunn,
 Victor Heinze; Formerly Teacher of Piano,
 Cosmopolitan School of Music,
 Indianapolis

KENNETH ROSE

Director Department of Violin

Pupil of MaGibany, Indianapolis; of Arthur Hartmann,
 Paris; of George Lehmann, Berlin; of Souky Prague;
 Formerly Teacher, Metropolitan School of Music,
 Indianapolis, and Concert Master, Indian-
 apolis Symphony Orchestra

AMELIE THRONE

Piano

Pupil of Maurice Aronson, Vienna; of Josef Lhevinnc,
 Berlin; of Sigmund Stojowski, New York;
 of Harold Bauer, New York

ROY UNDERWOOD

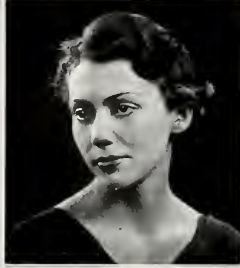
Director of Piano Department

B.Mus., Bethany College; Fellowship Student, Juilliard
 Foundation, three years; Pupil of Mollie Margolies,
 Oliver Denton, Alexander Siloti; Associate, Al-
 berti Studios, New York; Associate Pro-
 fessor of Piano, University of Kansas

Student Council

1936

BOARDING STUDENT COUNCIL



HELEN JONES
P R E S I D E N T



DOROTHY JAEGER
V I C E P R E S I D E N T



BEVERLY LACK
S E C O N D V I C E P R E S I D E N T



MARION WEBER
S E C R E T A R Y



JEANNE COOKSON
H I G H S C H O O L R E P R E S E N T A T I V E



BILLIE FRANK SMITH
C H A P E L P R O C T O R , 1ST S E M E S T E R



LAURA MAE CARPENTER
C H A P E L P R O C T O R , 2ND S E M E S T E R

1936



Hall Proctors

Top Row (First Semester): CARLISLE, *Heron*; BYRNE, *Fidelity*; TURNEY, *Pembroke*;
LUDWIG, *Senior*

Bottom Row (Second Semester): SMITH, *Heron*; STALLINGS, *Founders*; MOORE, *Fidelity*;
FRISTOE, *Pembroke*; JONES, *Senior*

Not in Picture: MARION DOERRER, *Founders (First Semester)*



THE STUDENT COUNCILS

THE Boarding and Day Student Councils, composed of representative girls from each school unit, are organized for the purpose of making and keeping regulations which are necessary in any community. Each girl, on both Boarding and Day Student Councils, endeavors to work with every student toward the attainment of the ideals for which Ward-Belmont stands.

1936

DAY STUDENT COUNCIL



DOROTHY COLMERY
PRESIDENT



RUTH HOPKINSON
VICE PRESIDENT



MARY ALICE HERBERT
SECOND VICE PRESIDENT



PEGGY DICKINSON
SECRETARY



JANE VANCE
HIGH SCHOOL REPRESENTATIVE



FRANCES WILKERSON
PROCTOR



MARGARET GLASGOW
PROCTOR, 2ND SEMESTER



Classes

Seniors



Miss Betty O'Donnell
Sponsor



Edwine Allen Schmid
President
ST. LOUIS, MISSOURI
Penta Tau
General Diploma

Hall Proctor, '35; MILESTONES Staff, '35; Dramatic Club, '35; French Club, '35, '36; Glee Club, '35; Active Member Athletic Association, '35, '36; Second Bowling Varsity, '36; Boarding Presidents' Council '36



Elizabeth Cornelius
Vice President
NASHVILLE, TENN.
Angkor
General Diploma
Hockey Varsity, Swimming Varsity '35; Winner Swimming Meet, '35, '36; Athletic Association Board, '35, '36; Glee Club, French Club, '35, '36; Active Member Athletic Association '35, '36; Day Student Presidents' Council '36.



Nelle Jane Ranck
Secretary
SAPULPA, OKLAHOMA
Del Vers
President Oklahoma Club, '35; Art Club, '36.



Ruth Ernestine Carr
Boarding Treasurer
WINDSOR, ONTARIO
Anti-Pandora
General Diploma
Textile and Clothing Diploma
Art Club, '36.



Evelyn Braden
Day Student Treasurer
NASHVILLE, TENN.
Angkor
General Diploma
President Angkor Club, '36; Glee Club, French Club, '35, '36; First Hockey Varsity, '35; Active Member Athletic Association, '35, '36; Day Student Presidents' Council, '36.

To THINK of this past year is to call up a train of memories more crowded than we could have anticipated

To SPEAK of the platform we formulated as a standard by which to measure our progressions of the year, we wonder if we have fulfilled the requirements which were the notches in our measuring stick.

To DO best and strive highest is the goal toward which we travel as we leave Ward-Belmont—the Senior Class of 1936.



SENIOR CLASS

SARAH ASHLEY

DAYTON, OHIO
Del Vers

General Diploma

President Del Vers Club, '36; First Hockey Varsity, '36; Second Hockey and Basketball Varsities, '35; Boarding Presidents' Council, '36.

JEAN BAILEY

KANSAS CITY, KANSAS
Del Vers

General Diploma, Expression Certificate

Associate Editor Hyphen, '36; President Kansas Club, '35; French Club, '35, '36; Boarding Presidents' Council, '36



MARGARET BARTON

MIDDLETOWN, OHIO
Agora

General Diploma

JANE BERGER

MEXICO, MISSOURI
Agora

General Diploma

French Club, Glee Club, Choir, '35, '36.



ELLEN BOWERS

NASHVILLE, TENNESSEE
Angkor

General Diploma

Day Student Presidents' Council, '35, '36; Vice President Senior-Middle Class, '35; Active Member Athletic Association, '35, '36; Bowling Varsity, '35, '36; Winner Bowling Tournament, '35; Athletic Association Board, '36; French Club, '35, '36.

FRANCES EVELYN BRATTON

NASHVILLE, TENNESSEE
Eccovasin

General Diploma, Expression Diploma

Second Bowling Varsity, '36; Glee Club, '35



JEANNE BRIGHAM

WEBSTER GROVES, MISSOURI
Penta Tau

General Diploma

President Penta Tau Club, '36; Boarding Presidents' Council, '36; Glee Club, '35; French Club, Hyphen Staff, '35, '36



BARBARA BROWN

EL DORADO, KANSAS
Agora



SENIOR CLASS



BETTY LOUISE BURNS

PONTIAC, MICHIGAN

Del Vers

Foods Diploma

Treasurer Del Vers Club, '36; Circulation Manager Hyphen, '36.



PHYLLIS OAKLEAF CARR

BARTLESVILLE, OKLAHOMA

X. L.

General Diploma, Dancing Certificate

President Spanish Club, '36; Secretary Spanish Club, '35; French Club, '36.



MARTHA CAROLYN CARSON

LOUISVILLE, KENTUCKY

Anti-Pandora

General Diploma

Spanish Club, '35, '36.



MARY BETH CATON

BLUEFIELD, WEST VIRGINIA

X. L.

General Diploma

Secretary X. L. Club, '36; Glee Club, '35; Choir French Club, '36; Active Member Athletic Association, '36.



CONSTANCE CHASE

CONCORD, NEW HAMPSHIRE

X. L.

Athletic Association Board, '36; Second Baseball Varsity, '35; Active Member Athletic Association, '35, '36; Hyphen Staff, '35, '36; Art Club, Dramatic Club, '35; Second Basketball Varsity, '36.



WINNIE COFFEE

DES MOINES, IOWA

Agora

General Diploma

President Athletic Association, '36; Hyphen Staff, '35, '36; Wordsmith Club, French Club, '35, '36; Secretary-Treasurer Dramatic Club, '35; Spanish Club, '35; First Hockey Varsity, '35; Winner Tennis Singles, '36; Second Baseball Varsity, '35; Active Member Athletic Association, '35, '36.



DOROTHY DAY COLMERY

NASHVILLE, TENNESSEE

Angkor

General Diploma

President Day Student Council, '36; Day Student Proctor, '35; Active Member Athletic Association, '35, '36; First Archery Varsity, '35; Day Student Presidents' Council, '35, '36.



MARY LESLIE COOK

EAST PRAIRIE, MISSOURI

Agora

General Diploma

Glee Club, '35, '36; French Club, '36; Choir, '36.



SENIOR CLASS

JULIETTE TABB CRAIG

NASHVILLE, TENNESSEE
Eccowasin

General Diploma

President Eccowasin Club, '36; Day Student, Presidents' Council, '36; Treasurer Eccowasin Club, '35

MARTHA CRAIG

FRANKLIN, TENNESSEE
Angkor

General Diploma, Expression Diploma

French Club, '35.

MARJORIE ALLEE CRUME

FORT SCOTT, KANSAS
Anti-Pandora

General Diploma, Expression Certificate

Y. W. C. A. Cabinet, '36; Dramatic Club, '35.

MAE ELIZABETH CUDE

MADISON, TENNESSEE
Angkor

General Diploma

JANE CURFMAN

SALIDA, COLORADO
Tri K

General Diploma

Vice President Tri K Club, '33

LOUISE DOUGLAS

NASHVILLE, TENNESSEE
Angkor

General Diploma

Active Member Athletic Association, '35, '36; Hyphen Staff, '36; French Club, '35.

ROSELLE EMERY

ATLANTA, GEORGIA
X. L.

*General Diploma, Art Certificate
Expression Certificate*

Y. W. C. A. Cabinet, '35; Secretary Art Club, '36

ELIZABETH EVANS

FORT WAYNE, INDIANA
F. F.

General Diploma, Art Certificate

President F. F. Club, '36; Art Club, '35, '36; French Club, '35.





SENIOR CLASS



MARGARET ELIZABETH FAWCETT

OMAHA, NEBRASKA
T. C.

General Diploma

Active Member Athletic Association, '35, '36; French Club, '35, '36; Glee Club, '35; Art Club, '36.

JANE FLANNIGAN

OSCEOLA, ARKANSAS
Anti-Pandora

General Diploma

President Y. W. C. A., '36; Y. W. C. A. Cabinet, '35; Secretary Senior-Middle Class, '35; Art Club, '35, '36.



EMALOU FLOREY

OVERTON, TEXAS
Agora

General Diploma, Art Certificate

Expression Certificate

President Art Club, '36; Secretary Athletic Association, '36; Active Member Athletic Association, '35, '36; Spanish Club, '35, '36.

MARY ANN FOLEY

MEMPHIS, TENNESSEE
A. K.

General Diploma

President A. K. Club, '36.



LOUISE FOSGATE

ORLANDO, FLORIDA
Osiron

General Diploma

President Osiron Club, '36; Secretary Osiron Club, '35; Active Member Athletic Association, '35, '36; Martha Washington, '36; Boarding Presidents' Council, '36.

MARY WILSON GILLESPIE

NASHVILLE, TENNESSEE
Eccowasin

General Diploma



MAXINE GRAHAM

TYLER, TEXAS
F. F.

General Diploma, Expression Certificate

Art Club, '36; Secretary F. F. Club, '36

MARGARET GREENE

NASHVILLE, TENNESSEE
Angkor

General Diploma

Editor Hyphen, '36; Day Student Editor Hyphen, '35; Vice President Angkor Club, '35; Second Vice President Day Student Council, '35; Day Student Presidents' Council, '36; First Hockey Varsity, '35; Athletic Association Board, '35; French Club, '35.



SENIOR CLASS

HELEN HAYDEN HALL

TOLEDO, OHIO
T. C.

General Diploma

Treasurer T. C. Club, '36; French Club, '35, '36.

ELIZABETH HARDESTY

FAIRMONT, WEST VIRGINIA
T. C.

General Diploma

VIRGINIA HARDESTY

FAIRMONT, WEST VIRGINIA
T. C.

General Diploma

Vice President French Club, '36; Secretary T. C. Club, '36.

KATHARINE ELIZABETH HAYS

YAZOO CITY, MISSISSIPPI
F. F.

Treasurer F. F. Club, '36.

RUTH HEWITT

HOUSTON, TEXAS
Osiron

General Diploma

First Tennis Varsity, '36; Active Member Athletic Association, '36.

LEORA CAROLYN HILL

CHATTANOOGA, TENNESSEE
A. K.

General Diploma

Y. W. C. A. Cabinet, '35, '36; Treasurer A. K. Club, '36; Glee Club, Choir, '36; Athletic Association Board '36; Active Member Athletic Association, '36; French Club, Hyphen Staff, '35.

FANNIE YOUNG HINDMAN

COLUMBIA, KENTUCKY
Osiron

RUTH HOPKINSON

NASHVILLE, TENNESSEE
Eccowasin

General Diploma

First Vice President Day Student Council, '36





SENIOR CLASS



PATRICIA HOWELL

CENTERVILLE, IOWA
Anti-Pandora

General Diploma

MILESTONES Staff, Hyphen Staff, '36; French Club, '35; President Iowa Club, '35.

DOROTHY M. JAEGER

CHICAGO, ILLINOIS
Tri K

Art Certificate

First Vice President Boarding Student Council, '36; Art Club, German Club, '36; Athletic Association Board, Glee Club, '35.



BETSY JONES

KENNETT, MISSOURI
A. K.

General Diploma, Piano Certificate

Expression Certificate

Hall Proctor, '36; Glee Club, Choir, '36; Dramatic Club, '35

HELEN JONES

ABILENE, TEXAS
Osiron

General Diploma

President Boarding Student Council, '36; Chapel Proctor, '35; Boarding Presidents' Council, '36; Spanish Club, '36; Second Hockey Varsity, '35; First Basketball Varsity, '35, '36; Active Member Athletic Association, '35, '36; President Texas Club, '35.



MAMIE JONES

MOUNT PLEASANT, TENNESSEE
Anti-Pandora

General Diploma

Vice President Anti-Pandora Club, '36; Y. W. C. A. Cabinet, '36; French Club, '35.

RUTH JONES

WILLIAMSBURG, IOWA
Agora

General Diploma

Vice President Agora Club, '36; Secretary Agora Club, '35; Glee Club, Choir, French Club, '35, '36.



MARION JOSEPHINE KEMP

SCHENECTADY, NEW YORK
X. L.

General Diploma, Art Certificate

Treasurer Art Club, '36; French Club, Art Club, '35, '36.

MARTHA ELLEN KIGER

MATTOON, ILLINOIS
Osiron

General Diploma

Editor MILESTONES, '36; Business Manager MILESTONES, '35; Boarding Presidents' Council, '36; French Club, '35, '36; Active Member Athletic Association, '35, '36.



SENIOR CLASS

ROYENA LOUISE KIPP

SAINT JOHN, KANSAS

Agora

General Diploma, Piano Certificate

Expression Certificate

Choir, '36; Glee Club, '35; French Club, '36.

TEDDIE KRAUSS

SAGINAW, MICHIGAN

Del Vers

Secretarial Certificate

Vice President Del Vers Club, '36; Y. W. C. A. Cabinet, '36; Secretary Del Vers Club, '35; President Michigan Club, '35.

MARY FRANCES LAUNIUS

MONROE, GEORGIA

X. L.

Piano Certificate

Glee Club, '35, '36; Choir, '36.

FRANCES MURAT LAVAL

LEXINGTON, KENTUCKY

Osiron

General Diploma

First Hockey Varsity, '36; Active Member Athletic Association, '36.

JANA LONGNECKER

SIoux CITY, IOWA

Anti-Pandora

General Diploma

Treasurer Anti-Pandora Club, '36; Secretary Spanish Club, '36; French Club, '35; Art Club, '36; Second Hockey Varsity, '36; Active Member Athletic Association, '36.

JANE E. LUDWIG

INDIANAPOLIS, INDIANA

A. K.

General Diploma, Expression Certificate

Hall Proctor, '36; French Club, '35, '36.

EVELYN McCALL

BIRMINGHAM, ALABAMA

Penta Tau

General Diploma

Second Vice President Y. W. C. A., '36; President Alabama Club, '35; French Club, '35, '36.

JEAN McEWAN

PORT ARTHUR, TEXAS

Del Vers

Art Club, '36.





SENIOR CLASS



VIOLET MADDOX
MAYSVILLE, KENTUCKY
X. L.

Art Club, '36.



ELIZABETH MASTIN
HUNTSVILLE, ALABAMA
X. L.

General Diploma, Expression Certificate
Active Member Athletic Association, '35, '36; French Club, '35; Art Club, '36.



MARTHA ELLEN MERRYDAY
DAYTONA BEACH, FLORIDA
A. K.

General Diploma
Secretary Y. W. C. A., '35; Y. W. C. A. Cabinet, '36.



JANE MEYER
MONTGOMERY, WEST VIRGINIA
T. C.

General Diploma, Expression Certificate
Vice President Athletic Association, '35; General Manager Athletic Association, '36; Spanish Club, '35, '36; Second Basketball Varsity, '36.



ELIZA TURNER MONK
CHEROKEE, ALABAMA
X. L.

General Diploma



PAULINE MYERS
JOPLIN, MISSOURI
Anti-Pandora

General Diploma
President Anti-Pandora Club, '36; Boarding Presidents' Council, '36; Art Club, '36.



MAUDE ELIZABETH NOE
NASHVILLE, TENNESSEE
Ariston

General Diploma
Secretary Ariston Club, '36.



EVELYN NORTON
COLLEGE STATION, TEXAS
Del Vers

General Diploma
Spanish Club, '35, '36.



SENIOR CLASS

MILDRED HILL PARKER

NASHVILLE, TENNESSEE

Triad

General Diploma

Spanish Club, Glee Club, '35, '36.

JANET PASCOE

CARNEGIE, PENNSYLVANIA

Tri K

Vice President Athletic Association, '36; First Hockey and Archery Varsities, '35; First Basketball Varsity, '36; Active Member Athletic Association, '35, '36.



FRANCES LOUISE PRINCE

CHARLESTON, WEST VIRGINIA

T. C.

General Diploma

President T. C. Club, '36; Vice President T. C. Club, '35; Second Vice President Boarding Student Council, '35; Active Member Athletic Association, '35, '36; Boarding Presidents' Council, '36.

BETTIE JAYNE REED

MARSHALTTOWN, IOWA

Agora

General Diploma, Art Certificate

President Agora Club, '36; Art Club, '35, '36; Dramatic Club, '35; Boarding Presidents' Council, '36.



REBECCA RICE

NASHVILLE, TENNESSEE

Ariston

General Diploma, Expression Diploma

President Ariston Club, '36.

BETTY SUE ROBERSON

NASHVILLE, TENNESSEE

Ariston

General Diploma

Wordsmith Club, '36, Secretary Ariston Club, '35; Spanish Club, '35.



ELIZABETH ROGERS

SHELBYVILLE, KENTUCKY

Tri K

George Washington, '36.

MARTHA ANNE ROGERS

MORRISTOWN, TENNESSEE

Anti-Pandora

General Diploma

Art Club, '36; Dramatic Club, '35.



SENIOR CLASS

**ELIZABETH RUDOLPH**

SPRINGFIELD, TENNESSEE

X. L.

General Diploma

President X. L. Club, '36; Vice President X. L. Club, '35; French Club, '35.

**ELSIE ELEANOR SANTE**

WEBSTER GROVES, MISSOURI

X. L.

*General Diploma, Riding Certificate
Piano Certificate, Organ Certificate*

Orchestra, Choir, '36; Athletic Association Board, '36; Glee Club, '35; Sergeant-at-Arms X. L. Club, '35.

**MILDRED SARTOR**

BICKNELL, INDIANA

X. L.

General Diploma

Athletic Association Board, '36; Y. W. C. A. Cabinet, '36; Vice President X. L. Club, '36; Spanish Club, '35, '36; First Hockey Varsity, '36; Active Member Athletic Association, '35, '36.

**PAT SCHORNDORFER**

ELYRIA, OHIO

Tri K

General Diploma

President Tri K Club, '36; Secretary Tri K Club, '35; MILESTONES Staff, '35; President Spanish Club, '35; First Hockey Varsity, '35. Second Hockey and Basketball Varsity, '36; Active Member Athletic Association, '35, '36.

**ELIZABETH SIEGMUND**

WEBSTER GROVES, MISSOURI

Tri K

General Diploma

News Editor Hyphen, '36; French Club, '36; Treasurer Tri K Club, '36; Active Member Athletic Association, '36.

**CARROLL HINTON SHEEP**

HOT SPRINGS, ARKANSAS

Osiron

General Diploma, Art Certificate

Art Club, '35, '36; Spanish Club, '36.

**BILLIE FRANK SMITH**

CLARKSVILLE, TENNESSEE

X. L.

General Diploma

Chapel Proctor, '36.

**DOROTHY STRICKLAND**

NASHVILLE, TENNESSEE

Triad

General Diploma

First Archery Varsity, '35.

SENIOR CLASS

MARY ELIZABETH SUDHOFF

NEW CASTLE, INDIANA

Agora

General Diploma, Voice Certificate

President Glee Club, '36; Glee Club, '35; Choir, '35, '36; French Club, '36.

HELEN ELIZABETH TIBBETS

SAN ANTONIO, TEXAS

Osiron

General Diploma, Piano Certificate

President Texas Club, '36; Treasurer Osiron Club, '36; Choir, French Club, Hyphen Staff, '36; Second Hockey Varsity, '36; Active Member Athletic Association, '36.

LOUISE MARTIN TIMBERMAN

GALLATIN, TENNESSEE

Ariston

General Diploma

German Club, '36.

ELIZABETH TIPTON

TIPTONVILLE, TENNESSEE

A. K.

General Diploma

Y. W. C. A. Cabinet, '36; Vice President A. K. Club, '36; Hall Proctor, '35; First Baseball Varsity, '35; First Hockey Varsity, '36; Second Hockey Varsity, '35; Active Member Athletic Association, '35, '36; German Club, '35; Vice President German Club, '36.

ANNIE LOU WALL

DREW, MISSISSIPPI

Agora

General Diploma, Expression Diploma

President Orchestra, '36; Treasurer Agora Club, '36, Orchestra, '35.

LILLIAN ANDERSON WALTERS

NASHVILLE, TENNESSEE

Angkor

General Diploma

Secretary Angkor Club, '36.

MARION EVELYN WEBER

MILWAUKEE, WISCONSIN

Tri K

General Diploma

Secretary Boarding Student Council, '36; Hall Proctor, '35; Sergeant-at-Arms Tri K Club, '35; Active Member Athletic Association, '35, '36; First Hockey Varsity, '35, '36; First Baseball Varsity, '35; Dramatic Club, '35; French Club, '35, '36.

MARY NORMAN WEST

SPARTA, TENNESSEE

Penta Tau

General Diploma, Expression Diploma

Y. W. C. A. Cabinet, '36; Vice President Spanish Club, '36; Secretary Spanish Club, '35.





SENIOR CLASS



ELEANOR WALKER WHITSON

ATLANTA, GEORGIA

Penta Tau

General Diploma

President French Club, '36; Wordsmith Club, Hyphen Stall, '36.

FRANCES WILKERSON

NASHVILLE, TENNESSEE

Eccowasin

General Diploma

Day Student Proctor, '36; Secretary Eccowasin Club, '35.

MARY DONNAN WILSON

LAKELAND, FLORIDA

Tri K

General Diploma

Y. W. C. A. Cabinet, '36; Vice President Spanish Club, '36; Secretary Spanish Club, '35.

MOSELLE WORSLEY

COLUMBUS, GEORGIA

Tri K

General Diploma

MILESTONES Staff, '35, '36; President Georgia Club, '36; Vice President Tri K Club, '36; French Club, '35, '36; First Hockey and Basketball Varsities, '36; Second Hockey and Basketball Varsities, '35; First Tennis and Baseball Varsities, '35; Active Member Athletic Association, '35, '36.

SENIOR SONG

I

We pledge now our love for our old W.-B.,
We vow to be ever true;
We pledge, too, our love for our dear Senior Class—
God bless them, the old and the new.
We'll hold high those colors, the Gold and the Blue;
Our banners shall kiss the sky.
Our faith all resisting, our goal for life's best,
Our motto: "To do or die."

II

The joys we have here will not fly as the leaves;
They'll last us life's journey through;
And the love we have now for the friendships we've made
Will live in our memories, too;
And though we must part from each other some day,
As Seniors have parted before,
The glorious spirit of old '36
Will linger forevermore.



Specials



Diploma Students
WALL, CARR, WEST, BURNS

Special Diplomas and Certificates

Students receiving special diplomas or certificates, sometimes in addition to the Junior College General Diploma, are those who have discovered early in life some special capacity and have developed it into an ability without loss of time. Diploma students are:

EXPRESSION
FRANCES BRATTON, MARTHA CRAIG, REBECCA RICE, ANNIE LOU WALL, MARY NORMAN WEST.

FOODS
BETTY BURNS
TEXTILES
RUTH CARR.

Those receiving certificates are:
EXPRESSION
JEAN BAILEY, MARJORIE CRUME, ROSSELLE EMERY, MAXINE GRAHAM, MIRIAM HARWELL, CHARLOTTE HOWARD, BETSY JONES, ROYENA KIPP, JANE LUDWIG, ELIZABETH MASTIN, JANE MEYER, MARGARET ELLEN PEEBLES.

ART
ROSELLE EMERY, ELIZABETH EVANS, JANE FLANNIGAN, EMALOU FLOREY, DOROTHY JAEGER, MARION KEMP, BETTIE JAYNE REED, CARROLL SHEEP.

DANCING
PHYLLIS CARR
RIDING
ELSIE SANTE.

SECRETARIAL
TEDDIE KRAUSS, MARGARET MILLSPAUGH,
PIANO
BETSY JONES, ROYENA KIPP, MARY FRANCES LAUNIUS, ELSIE SANTE, HELEN TIBBETS.

VOICE
MARY SUDHOFF.
ORGAN
ELSIE SANTE.



Certificate Students

Top Row: KEMP, REED, CRUME, EVANS, BAILEY, KRAUSS, FLOREY, SHEEP, JAEGER, SANTE, TIBBETS, KIPP, CARR

Bottom Row: PEEBLES, CLAYTON, HARWELL, GRAHAM, EMERY, MASTIN, LUDWIG, MEYER, JONES

Junior Midwives



MISS HELEN GRIZZARD
Sponsor



GRACE HILLMAN BENE-DICT
President
NASHVILLE, TENNESSEE
Angkor
High School Certificate

Penstaff Club, '34, '35, '36; French Club, '35; Athletic Association Board, '34; Secretary Athletic Association, '35; Treasurer Athletic Association, '36; First Hockey and Tennis Singles Varsities, '35, '36; First Tennis Doubles Varsity, '35; First Apparatus Varsity, '34; First Basketball Varsity, '36; Active Member Athletic Association, '33, '34, '35, '36.



BARBARA LEAKE
Vice President
TACOMA, WASHINGTON
Anti-Pandora
High School Certificate

MILESTONES Staff, '36; Second Basketball Varsity, '36; French Club, '33, '34; Vice President Sophomore Class, '34; Treasurer Anti-Pandora Club, '34, '35; Athletic Association Board, '34; Treasurer Athletic Association, '35; Penstaff Club, '36; Active Member Athletic Association, '36.



BETTY RYE
Secretary
NASHVILLE, TENNESSEE
Eccowasin
High School Certificate

First Tennis Varsity, '36; French Club, '36; Active Member Athletic Association, '36.



SHIRLEY LEAKE
Treasurer
NASHVILLE, TENNESSEE
Eccowasin
High School Certificate

Vice President Eccowasin Club, '36; Treasurer Freshman Class, '33; Dramatic Club, '35; Active Member Athletic Association, '36.

THE Junior-Middle Class this year introduced a new activity—that of challenging the Junior Class in hockey and basketball. When the Junior-Middles were recognized in chapel, they took loyalty as their theme—an essential quality which they thought should be shown in loyalty to oneself or one's ideals, to one's friends, and to Ward-Belmont by upholding its ideals. A banquet preceded the climax of the year—graduation.

JUNIOR-MIDDLE CLASS

JEAN ANN ALLEN
MAYFIELD, KENTUCKY
Eccowasin
High School Certificate

MARTHA ARMISTEAD
NASHVILLE, TENNESSEE
Triad
High School Certificate

ESTHER HELEN AZARCH
WILLIAMSON, WEST VIRGINIA
Ariston
High School Certificate
Glee Club, '34, '35.

VIRGINIA BARRET
LOUISVILLE, KENTUCKY
Tri K
High School Certificate
Hall Proctor, '33, '34; Boarding Student Council, '35;
Penstaff, '35, '36; Secretary Tri K Club, '36; Sergeant-
at-Arms Tri K Club, '32, '33; Vice President Junior
Class, '35.

JEAN BATEMAN
ZANESVILLE, OHIO
Del Vers
High School Certificate
Second Basketball Varsity, '36.

MARY BENSON
NASHVILLE, TENNESSEE
Triad
High School Certificate
Treasurer Triad Club, '36.

JOAN BUTTERFIELD
LANSING, MICHIGAN
A. K.
High School Certificate
Secretary A. K. Club, '36.

GLEE CALLAWAY
DETROIT, MICHIGAN
Del Vers
President Michigan Club, '36; Sergeant-at-Arms Del
Vers Club, '36.





JUNIOR-MIDDLE CLASS



BETTY CARLISLE

SOUTH BEND, INDIANA
Tri K

High School Certificate

Penstaff, French Club, '35, '36; Hyphen Staff, Dramatic Club, '35; Hall Proctor, '36.

JEANNE COOKSON

CHICAGO, ILLINOIS
Tri K

High School Certificate

Boarding Student Council, '36; First Basketball Varsity, '36; Treasurer Tri K Club, '34; President Indiana Club, '34; Glee Club, Choir, Dramatic Club, '34, '35; Athletic Association Board, '35; Active Member Athletic Association, '34, '35, '36; First Hockey Varsity, '35.



MILDRED COX

CHARLESTON, WEST VIRGINIA
T. C.

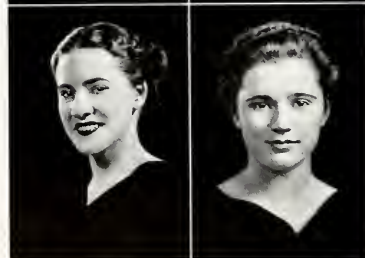
High School Certificate

BEVERLY JANE DAVIS

NASHVILLE, TENNESSEE
Triad

High School Certificate

First Hockey Varsity, '35, '36; Active Member Athletic Association, '35, '36.



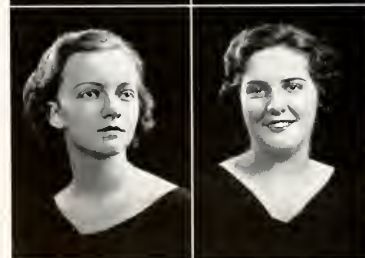
CONNIE DE FUNIAK

LOUISVILLE, KENTUCKY
A. K.

PEGGY DICKINSON

NASHVILLE, TENNESSEE
Eccowasin

High School Certificate



MARCELLA DRISKILL

FRANKLIN, TENNESSEE
Triad

High School Certificate

First Hockey Varsity, '36; Active Member Athletic Association, '36.

SARAH EVERETT

MCKENZIE, TENNESSEE
T. C.

High School Certificate

First Basketball Varsity, '36.



JUNIOR-MIDDLE CLASS

JEAN MORGAN EWING

NASHVILLE, TENNESSEE
Eccowasin

High School Certificate

Secretary Eccowasin Club, '36.

CORNELIA CLARK FORT

NASHVILLE, TENNESSEE
Eccowasin

High School Certificate

Penstaff Club, '36.

MATILDA GIBSON

NASHVILLE, TENNESSEE
Angkor

High School Certificate

Treasurer Angkor Club, '33; Day Student Council, '34;
Secretary Junior Class, '35.

MARGARET GLASGOW

NASHVILLE, TENNESSEE
Eccowasin

High School Certificate

Day Student Proctor, '36; Treasurer Eccowasin Club,
'36.

SARAH GOODPASTURE

NASHVILLE, TENNESSEE
Eccowasin

High School Certificate

LAURA GRAHAM

MADISON, TENNESSEE
Angkor

High School Certificate

MARTHA GREENE

NASHVILLE, TENNESSEE
Angkor

High School Certificate

Vice President Angkor Club, '36; First Hockey Varsity,
'36; Active Member Athletic Association, '36; French
Club, '35.

MARY JAC GRIFFITH

ANDERSON, INDIANA
T. C.

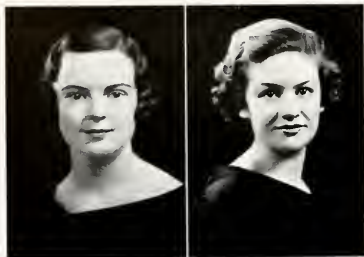
High School Certificate

President T. C. Club, '35; Vice President Freshman
Class, '35.





JUNIOR-MIDDLE CLASS



MARY LUCILE JOHNSON

NASHVILLE, TENNESSEE
Triad

High School Certificate

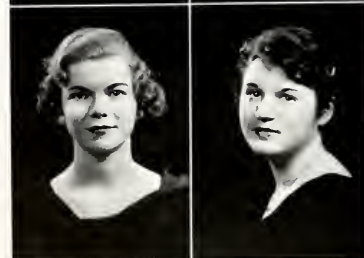
Secretary Freshman Class, '33; Secretary Triad Club, '36; First Hockey Varsity, '36; Active Member Athletic Association, '36.



PAULINE KAISER

ST. LOUIS, MISSOURI
Tri K

High School Certificate



FRANCES VIRGINIA KOELKER

JOPLIN, MISSOURI
Anti-Pandora

High School Certificate



MARION LATTA

NASHVILLE, TENNESSEE
Triad

High School Certificate

President Triad Club, '36; Second Basketball Varsity, '36; Second Hockey Varsity, '34; Active Member Athletic Association, '36.



ELLEN MARTIN

NASHVILLE, TENNESSEE
Triad

High School Certificate

President Freshman Class, '33; Treasurer Triad Club, '34; Treasurer Junior Class, '35; Second Basketball Varsity, '36; Active Member Athletic Association, '36.



DORIS MEAD

TULSA, OKLAHOMA
F. F.

High School Certificate

Spanish Club, '36.



JANE MEADORS

NASHVILLE, TENNESSEE
Eccowasin

High School Certificate

President Sophomore Class, '34.



IONE REBMAN MCKNIGHT

COURTLAND, ALABAMA
Tri K

High School Certificate

JUNIOR-MIDDLE CLASS

MARY WOODARD MOREL

BRENTWOOD, TENNESSEE
Eccowasin

High School Certificate

Secretary-Treasurer Glee Club, '36; Active Member
Athletic Association, '36.

AGNES ORMOND

SAVANNAH, GEORGIA
T. C.

High School Certificate

ELAINE OSTERGARD

CANTON, OHIO
F. F.

FRANKIE PATRICK

SAN ANTONIO, TEXAS
F. F.

First Hockey and Basketball Varsities, '36; Athletic
Association Board, '36; Active Member Athletic As-
sociation, '36; Penstaff, Spanish Club, '36.

EMILY PAYNE

NASHVILLE, TENNESSEE
Triad

KATHARINE PEARCE

ASHEVILLE, NORTH CAROLINA
T. C.

High School Certificate

French Club, '35.

MICKIE PERRY

NASHVILLE, TENNESSEE
Angkor

High School Certificate

MARGARET PITCHER

LAKESWOOD, OHIO
T. C.

High School Certificate

Vice President T. C. Club, '36.



JUNIOR-MIDDLE CLASS



BARBARA RENIGER

LANSING, MICHIGAN
Del Vers

High School Certificate

FRANCES ELIZABETH RIEDY

EVANSTON, ILLINOIS
Agora

High School Certificate

Choir, Orchestra, Penstaff, Spanish Club, '36.



EDITH FORREST ROBERTSON

NASHVILLE, TENNESSEE
Ariston

High School Certificate

PHYLLIS LORRAINE SCHACKNE

TOLEDO, OHIO
Agora

High School Certificate

Choir, Spanish Club, '36.



ALLIE SEDWITZ

YOUNGSTOWN, OHIO
A. K.

High School Certificate

BARBARA SMITH

NEW BRIGHTON, PENNSYLVANIA
A. K.

High School Certificate



MURIEL DOROTHY SOMATT

FREMONT, OHIO
Agora

High School Certificate

SUE STICKNEY

FLINT, MICHIGAN
F. F.

High School Certificate



JUNIOR-MIDDLE CLASS

ANNETTE STOUT
MUNCIE, INDIANA
F. F.
High School Certificate

CARMENCITA TORREY
NASHVILLE, TENNESSEE
Ariston
High School Certificate

SARAH WELLS
NASHVILLE, TENNESSEE
Ariston
High School Certificate
Glee Club, '36.

MARGARET WHITE
NASHVILLE, TENNESSEE
Triad
High School Certificate



HARRIET ADELINE WILLIAMS
MUSCOGEE, FLORIDA
Tri K
High School Certificate





JUNIOR-MIDDLE POEM



When far-oft years have held their sway,
And we have come to God to stay;
When buildings, built by mortal men,
Have all come tumbling down again;
'Tis then that we will stand and say,
"Ward-Belmont shall not pass away!"
She still will live in us, you see;
And, if our souls immortal be,
Then that is more the reason why
Ward-Belmont School shall never die!

—PEGGY DICKINSON



Officers



SENIOR-MIDDLE CLASS

THE Senior-Middle Class of Ward-Belmont began their varied activities for the year 1935-36 with a class picnic given at Mr. Benedict's summer home. In November the class gave a chapel program, Louise Baxter representing the class as its speaker. In addition to this, the Seniors and faculty were given a coffee by the class in December, and the Senior-Middle Banquet, given for the Seniors, was held in March, Laura Mae Carpenter acting as toastmistress.



EMILY HAMILTON
President



ANNE HUDDLESTON
Vice President



DOROTHY MARTIN
Secretary



LOUISE MATHEWS
Treasurer



MARGARET GILES
Day Student Treasurer



HIGH SCHOOL CLASS OFFICERS

The lower classes of Ward-Belmont High School confine their class activities principally to class parties of various types. However, the Juniors have been particularly active this year, for at the end of nearly every sport season they have challenged the Junior-Middles to a game. The sponsors of the classes are as follows: Junior, Miss Cayce; Sophomore, Miss Nance; Freshman, Miss Major.



DOROTHY PROCTOR
President



LLEWELYN GRANBERY
Vice President



LAWRECE BUTLER
Secretary



SUSAN CHEEK
Treasurer



SOPHOMORE CLASS OFFICERS



ANNE GANIER
President



MARTHA ROTH
Vice President

FRESHMAN CLASS OFFICERS



ADELAIDE ROBERTS
President



FRANCES CARTER
Vice President



MARY ALENE EDWARDS
Secretary



Activities



Publications



HYPHEN



MARGARET GREENE
Editor



JEAN BAILEY
Assistant Editor



ELIZABETH SIEGMUND
News Editor



BETTY BURNS
Circulation Manager

1936



Hyphen Reporters and Feature Writers

Back Row: ANNA MAY MOUL, LOUISE DOUGLAS, JEAN McEWAN, MARGARET CARRIGAN,
LOUISE BAXTER, LAURA MAE CARPENTER, HELEN TIBBETS, JEAN BURK, FELECIA MONGONE

Front Row: WINNIE COFFEE, JANE MEYER, PATTIE HOWELL, JANE EDGERLY, ANNE BROWNING,
MARY GRISWOLD

Not in Picture: ANNE TURNER, ELEANOR WHITSON, BETTY JANE HOPEWELL, JEANNE BRIGHAM,
MARGARET KEYES CLARK, BEVERLY LACK

PUBLICATIONS

THE Hyphen and the MILESTONES combine their work to give to the student body a picture of life at Ward-Belmont. The Hyphen records from week to week the activities and achievements of students and school as they come, and the MILESTONES co-ordinates all the happenings and makes a united whole of the school year.



THE MILESTONES



MARTHA ELLEN KIGER
EDITOR



ANNA MAY MOUL
ASSOCIATE EDITOR



ELLEN BOWERS
DAY STUDENT EDITOR



MARGARET OZEE
BUSINESS MANAGER



MOSELLE WORSLEY
PHOTOGRAPHIC EDITOR



BARBARA LEAKE
HIGH SCHOOL REPRESENTATIVE



PATTIE HOWELL
FEATURE EDITOR



MARY EVELYN JENSEN
ART EDITOR



Y.W.C.A.



THE Y. W. C. A.



The Y. W. C. A. in Ward-Belmont tries to add fullness to the life of every girl by service to others and by a growing knowledge of God. Besides conducting Sunday School and Vespers each Sunday, the "Y" does social service work among five different groups of people in Nashville: The Tennessee Children's Home, The Home for Girls, The Old Ladies' Home, The Vanderbilt Hospital, and the Junior League. Forums for the girls on various current political and social situations are given, and school activities such as the Valentine Dinner Party are sponsored by the Y. W. C. A.



THE Y. W. C. A.



JANE FLANNIGAN
PRESIDENT



MINNIE MAUDE MAY
VICE PRESIDENT



EVELYN McCALL
SECOND VICE PRESIDENT



VIRGINIA PIPER
SECRETARY



LAURA MAE CARPENTER
TREASURER, 1ST SEMESTER



VIRGINIA BATTLE
TREASURER, 2ND SEMESTER



Committee Chairmen

Top Row: BRACKEN, VARGA, KRAUSS
Middle Row: BAXTER, HILL, WILSON, SARTOR
Front Row: MERRYDAY, PINKHAM, PIPER, EMERY, CRUME, JONES

Y. W. C. A. Cabinet

<i>Chairman Entertainment Committee</i>	VIRGINIA VARGA
<i>Chairman Community Tours Committee</i>	RUTH PINKHAM
<i>Chairman Publicity Committee</i>	MARTHA MERRYDAY
<i>Chairman Tennessee Children's Home Committee</i>	MILDRED SARTOR, TEDDIE KRAUSS
<i>Chairman Home for Girls Committee</i>	MAMIE JONES
<i>Chairman Vanderbilt Hospital Committee</i>	MARY NORMAN WEST
<i>Chairman Old Ladies' Home Committee (First Semester)</i>	ELIZABETH TIPTON
<i>Chairman Old Ladies' Home Committee (Second Semester)</i>	MARY DONNAN WILSON
<i>Chairman Junior League Home Committee</i>	MARY BRACKEN
<i>Chairman World Fellowship Committee</i>	LEORA HILL
<i>Chairman Membership Committee</i>	MARJORIE CRUME
<i>Sponsor</i>	MISS RUBY VAN HOOSER

Departmental Clubs



THE FOREIGN LANGUAGE CLUBS

LE CERCLE FRANCAIS, the Spanish Club, and the German Club are all formed from the same principles, and all have the same goal—that of creating in foreign language students an interest in the country, and a desire to become better acquainted with the habits, fashions, and sports of each particular country whose language they are studying. The different clubs take on quite a social aspect, for besides the papers and reports given, at various meetings songs and games are sung and played, and occasionally even an attempt is made to play foreign bridge.



The German Club

Top Row: JAEGER, TIPTON, KASPAR

Bottom Row: GERY, VOIGT, LOTZ, TIMBERMAN

Officers

<i>President</i>	JEAN FLEMING
<i>Vice President</i>	ELIZABETH TIPTON
<i>Secretary-Treasurer</i>	RUTH MARGARET VOIGT
<i>Sponsor</i>	MRS. FRANCES HELEN JACKSON

1936



French Club

Top Row: SCHMID, WEBER, SIEGMUND, BOWERS, COFFEE, GRISWOLD, WORSLEY, DOUGLAS, COE, KIGER

Middle Row: CATON, KIPP, BOSTON, HALL, CORNELIUS, BERGER, COOK, BURGESS, CARR, TIBBETS

Bottom Row: FAWCETT, SUDHOFF, KEMP, HARDESTY, WHITSON, MISS SEAY, MERSFELDER, WHITE, BRIGHAM, BRADEN

Officers

President.....ELEANOR WHITSON *Sponsor*.....MISS HIBERNIA SEAY



Spanish Club

Top Row: SCHORNDORFER, MEYER, FLOREY, POLLARD, NEIL, SHEEP, WHITSON

Middle Row: CARSON, RUDOLPH, PEEBLES, BURGESS, PHILLIPS, LUKER

Bottom Row: BREESE, TREADWELL, LONGNECKER, MR. DONNER, CARR, PARKER, WANER

Officers

President.....PHYLLIS CARR *Sponsor*.....MR. THOMAS B. DONNER

1936

THE LITERARY CLUBS

WORDSMITH holds a contest semiannually in which any college student may enter original manuscripts of poetry, prose, or drama. If the material is judged to be of necessary merit, its authoress is elected into this literary organization. At the meetings, which are held every two weeks, the girls bring in material for criticism and discussion. During the year various speakers of literary fame give lectures to the members, which inspires every girl who is interested in writing. Penstaff, a corresponding society, has the same ideals and principles, but is limited to high school girls who have competed in a similar contest.



Wordsmith

Top Row: TURNEY, MATHews, MISS SCRUGGS, COFFEE, EDGERLY
Bottom Row: ROBERSON, WHITSON, BAXTER, WHITE, MARSH, CLARK

Officers

President.....VIRGINIA WHITE Sponsor.....MISS THEODORA SCRUGGS



Penstaff

Top Row: NOLAND, BARRET, LEAKE, FORT, VANCE, GILLESPIE
Middle Row: CARLISLE, EDWARDS, CROSSAN, BURK, PERRY, HAILE
Bottom Row: COLE, PROCTOR, JETER, BUTLER, RIEDY, PATRICK, GRANBERY, BENEDICT

Officers

President.....LAWRECE BUTLER Sponsor.....MRS. SUSAN S. SOUBY

Music, Dramatics, Art



ART, MUSIC, DRAMATICS

THERE is every opportunity for development along cultural lines in the extra-curricular activities at Ward-Belmont, certainly in the music, art, and dramatics departments. Tryouts are held to select not only the talented girls, but those who are really interested in the type of work offered. Outstanding performances in the dramatic departments are the Christmas play, the Easter pageant, and the Shakespearean play. Both the orchestra and the glee club give concerts, and the art club brings exhibits, lectures, and artists to broaden the girls' knowledge of art.



The Art Club

Top Row: HELBING, OSMUNDSON, GILL, BROWN, LEWIS, HEASLEY, CARLISLE, BOSTON, SMITH

Middle Row: RUDOLPH, WILLIAMS, SHEEP, JAEGER, GRAVES, CARR, COLVERT, EVANS,
RANCK, WHITE, MOUL

Bottom Row: CAIN, ROGERS, FLANNIGAN, MASTIN, EMERY, LACK, FLOREY, KEMP, LUNSFORD,
PHILLIPS, COLLINGS, REED, JENSEN

Officers

President.....	EMALOU FLOREY
Vice President.....	BEVERLY LACK
Secretary.....	ROSELLE EMERY
Treasurer.....	MARION KEMP
Sponsor.....	MISS MARY WYNNE SHACKELFORD



The Glee Club

SYDNEY DALTON.....	Conductor
MARY SUDHOFF.....	President
MARY MOREL.....	Secretary-Treasurer
EMMA CORNELIA PITT.....	Guest Soloist



The Orchestra

KENNETH ROSE, *Conductor*; CATHERINE ANDREWS, *Soloist*

1936

ANNUAL EXPRESSION PLAYS

Under Direction of PAULINE SHERWOOD TOWNSEND



"White Shepherds Watched"

Christmas Play



"As You Like It"

Shakespearean Play



Athletics





ATHLETICS



ATHLETICS play such an important part in the life of the Ward-Belmont student that a large section of her journal will be devoted to the recording of these sports. From the first hockey game in the crisp, fall air to the final match of the doubles tennis tournament in the late spring, interest and competition run high. This year the Tri K's won the athletic plaque for obtaining the greatest number of points in year-round sports; Janet Pascoe and Jeanne Cookson were awarded medals for being the best all-round athletes, the former in the college department, the latter in the high school department.

1936

THE ATHLETIC ASSOCIATION

The purpose of this organization is to promote the welfare of the individual mentally, morally, and physically by arousing a genuine interest in athletics; and to establish the highest ideals for comradeship, good sportsmanship, and fair play.

Any student may be a participating member, and the student who totals 150 points in athletic activities becomes an active member. This enables her to hold an office on the board. The Athletic Board meets monthly for a general discussion of Ward-Belmont athletics. At the end of each sport season the board presents trophies and medals to the winning clubs and individuals.



WINNIE COFFEE
President



JANET PASCOE
Vice President



JANE MEYER
General Manager



EMALOU FLOREY
Secretary



GRACE BENEDICT
Treasurer



Sports Managers

Top Row: HILL, TIPTON

Middle Row: BOWERS, CORNELIUS, SARTOR

Front Row: SANTE, COOKSON, CHASE, JAEGER

<i>Basketball Manager</i>	MILDRED SARTOR
<i>Apparatus Manager</i>	PEGGY WRENNE
<i>Bowling Manager</i>	ELLEN BOWERS
<i>Swimming Manager</i>	ELIZABETH CORNELIUS
<i>Archery Manager</i>	DOROTHY JAEGER
<i>Track Manager (First Semester)</i>	LEORA HILL
<i>Track Manager (Second Semester)</i>	FRANKIE PATRICK
<i>Baseball Manager</i>	ELIZABETH TIPTON
<i>Riding Manager</i>	ELSIE SANTE
<i>Tennis Manager</i>	CONNIE CHASE
<i>Hockey Manager</i>	JEANNE COOKSON



HOCKEY



WHITEMAN



PASCOE



KIMMEL



LAVAL



WRENNE

The hockey season is always one of the most exciting seasons, and even though hockey is a comparatively new sport for a great many girls, they all go at it so enthusiastically that good teams are always produced. The Tri K's, being the only club to win all three of their games, consequently captured the championship. To complete the hockey season, the Seniors played the Senior-Middles on Thanksgiving morning, which is always the big game of the season and produces the greatest rivalry. This very muddy game went to the Seniors with a 5-1 score. As an added event this year, the hockey varsity played an alumnae team composed of past members of varsities. The alumnae took the game 3-2. The college varsity is composed of the following:

<i>Center Forward</i>	LOIS WHITEMAN
<i>Right Inner</i>	JANET PASCOE
<i>Left Inner</i>	SARA JANE KIMMEL
<i>Right Wing</i>	FRANCES LAVAL
<i>Left Wing</i>	PEGGY WRENNE
<i>Right Half</i>	MOSELLE WORSLEY
<i>Center Half</i>	SARAH ASHLEY
<i>Left Half</i>	MILDRED SARTOR
<i>Right Half</i>	MARION WEBER
<i>Left Full</i>	ELIZABETH TIPTON
<i>Goal</i>	JANE ALLISON



WORSLEY



ASHLEY



SARTOR



WEBER



TIPTON



ALLISON



HOCKEY



BENEDICT



GILLESPIE



DAVIS



GREENE



COOKSON

The high school varsity is as follows:

<i>Center Forward</i>	GRACE BENEDICT
<i>Right Inner</i>	ANN CAROLYN GILLESPIE
<i>Left Inner</i>	JANE DAVIS
<i>Right Wing</i>	MARTHA GREENE
<i>Left Wing</i>	JEANNE COOKSON
<i>Right Half</i>	FRANKIE PATRICK
<i>Center Half</i>	MARCELLA DRISKILL
<i>Left Half</i>	JEAN BURK
<i>Right Full</i>	LLEWELLYNA GRANBERY
<i>Left Full</i>	LUCILE JOHNSON
<i>Goal</i>	KEITH GLASGOW



PATRICK



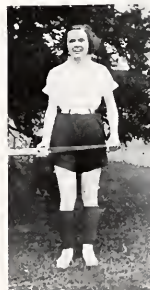
DRISKILL



BURK



GRANBERY



JOHNSON



GLASGOW

BASKETBALL



WORSLEY



PASCOE



FLOREY

This year the basketball season was exceptional from the standpoint that the two most important games of the season were one-sided. In the finals, the Tri K's won the trophy over the Osiron's without any difficulty. In the same way, in the Senior-Senior-Middle game, the Senior-Mids came out with the big end of the score without being seriously threatened.

Practices began before Christmas, and many exceptional players were produced. The interclub tournament eliminated all but the two clubs in the finals, but from all the clubs the college varsity was chosen as follows:

- Center Forward.....MOSELLE WORSLEY
- Right Forward.....JANET PASCOE
- Left Forward.....EMALOU FLOREY
- Center Guard.....MARY GRISWOLD
- Right Guard.....HELEN JONES
- Left Guard.....RACHAEL BRAUER



GRISWOLD



JONES



BRAUER

BASKETBALL



COOKSON



GRANBERY



BENEDICT

Members of the high school basketball varsity are as follows:

- Center Forward* JEANNE COOKSON
- Right Forward* . . . LLEWELLYNA GRANBERY
- Left Forward* GRACE BENEDICT
- Center Guard* SARAH EVERETT
- Right Guard* FRANKIE PATRICK
- Left Guard* KEITH GLASGOW



EVERETT



PATRICK



GLASGOW

BOWLING



BOWERS



WALLACE

Bowling this year caused much excitement, for all the clubs had good teams and there was a great deal of rivalry. The four clubs in the finals were: Angkor, Tri K, Anti-Pandora, and Eccowasin. The Tri K's were the victors with a final score of 502. Mary Pauline Butler, an A. K., made the highest score of the year, with one game of 167.

The Seniors took the bowling contest in the thrilling game with the Senior-Mids. Bowling varsity members are: ELLEN BOWERS, MARGUERITE WALLACE, MARY PAULINE BUTLER, and JEANNE COOKSON.



BUTLER



COOKSON

1936

SWIMMING

SWIMMING this year has created more interest than it has any time previous, and because of this very fact, more fine swimmers have been produced out of this year's classes than ever before. This year swimming was not classed as club competition, and consequently, girls won club letters only by passing certain difficult tests. The swimming season reached its climax in the swimming meet in which Elizabeth Cornelius took individual honors.

In addition to the elementary swimming and diving classes, the advanced swimming and diving classes, there were lifesaving classes in which many girls received their emblems. The more advanced swimmers worked for a Ward-Belmont letter by endeavoring to pass certain even more difficult tests than those for the club letters. Nancy Uhl, Elizabeth Cornelius, Virginia Hardesty, Jane Cornelius, and Peggy Armistead received their W.-B. letters.



ELIZABETH CORNELIUS
Individual Winner of Swimming Meet



UHL, CORNELIUS, HARDESTY, ARMISTEAD

TENNIS



COFFEE



RYE



BENEDICT

THE finals of the tennis tournament were played November 6, and Winnie Coffee emerged the victor over Betty Rye by a score of 6-4, 6-4. Coffee's neat placement shots, ease with which she played, her fast serves—all contributed to make her an easy winner. Betty Rye, runner-up, exhibited exceptionally good recovery and backhand shots.

Ruth Hewitt and Grace Benedict were in the semifinals which proved a good test of their tennis ability.



HEWITT

INDIVIDUAL WINNERS, 1935



ELEANOR IRWIN
Winner Spring Riding Show



PATTY CHADWELL
All-Round Athlete



Campus Life



CAMPUS LIFE



No diary of Mistress Belle-Ward would be complete without the recording of those activities, formal and informal, which go to make up the campus life at Ward-Belmont. Whether they be quiet chats in club village or the breath-taking excitement of May Day, they definitely have their place in the lives and memories of its students.



		DOE THE STAND TODAY					
TEAM	PTS.	WINS	LOSSES	TIES	POINTS	PERCENTAGE	STAND
		1	2	3	4		
FBI	10	10	0	0	100	100%	1
SAT	0	0	0	0	0	0%	
NOX	0	0	0	0	0	0%	

HAVE YOU SUBSCRIBED



Fog Day, and it looks like Anti-Panners . . . That's how they bought the Hyphen . . . And now, as I said before . . . Here's to the athlete . . . Pirates for a day . . . A hockey game in its prime . . . Watch that corner, girlie! . . . The Seniors in all their glory . . . Class Recognition Day.





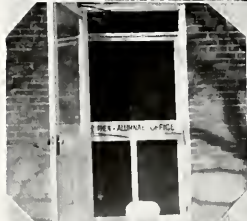
Clean shirts . . . the "Freshies" . . . It's Laval . . . Representatives of the Seniors . . . And does she knock 'em out! . . . It must be a problem . . . It's all over and Cayce's satisfied . . . That form; that stance! . . . Going someplace, Miss Ogden?



1936



Aren't they little dears? . . .
Calm, serene it sits . . .
Hope you get it! . . . We
needed a snow scene . . .
Need more be said? . . . Miss
Pugh thinks so, too! . . .
"The Big Four" . . . The
beauty of Ward-Belmont . . .
Happy, and with books in
her arms.





Going out the gate? . . . The
sages (?), or is it slaves? . . .
Monkeys climb trees too . . .
The Twins: the Brownings
. . . On the inside looking
out . . . The Honorable Ed-
itor Kiger . . . From tearoom
to infirmary . . . Just before
the test . . . Lazy days.





There ARE such animals, we see . . . Developing the maternal instinct . . . Right there! . . . The "Grand Old Man" of Ward-Belmont . . . Nothing like being happy . . . Bull! . . . Miss Townsend's Knox . . . The Townsend experts . . . "We are the Seniors."





Two ladies in gray . . .
 "Whence he came from, no
 one knows" . . . In case
 you're wondering, just El-
 liot and Pollard . . . It's
 going to pop! . . . Friends?
 Well! . . . Where's the horse?
 . . . Yo-ho-ho, and a bottle
 of rum . . . Maybe half an
 apple a day will suffice . . .
 Beware, I know!





She keeps the money, or the lack of money! . . . The hockey team that showed us how . . . Moselle looks harmless here! . . . We'll let you guess . . . Goody, goody . . . The bells of Ward-Belmont . . . The calm before the storm . . . And did we get beat . . . Well! . . . The Dean smiles for us.



1936



Why the books, just for show? . . . Parlez vous francais? Mais oui! . . . Take it easy we always say . . . Coy! That's what I call it . . . And I just laughed and laughed . . . Don't worry, for we'll never escape . . . The majority must be dieting . . . They must be chums . . . Smile sweetly!





The Misses Allen and Dickinson have a close-up! . . . Beauties and the beast . . . Don't know why, but there they are . . . A moment of concentration . . . Wait a minute, Miss Major . . . And you're not seeing double! . . . Going home . . . The infirmary beckons to us . . . It must be "Sweet Adeline."





Tsk, Tsk! . . . Doing tricks,
Lizzie? . . . A little family re-
union . . . A cute trick . . .
F. F.'s . . . Senior hangout
. . . Ward-Belmont ladies . . .
Well, Miss Kiger . . . What a
lovely profile!





One of many . . . The faculty "melodramer" advertises! . . . In the shade of the old summer house . . . Cayce solves another girl's problem . . . Just a moment of relaxation . . . Well, you name it! . . . A vision of loveliness . . . Perfect students—Yeh! . . . It must be a cute joke.

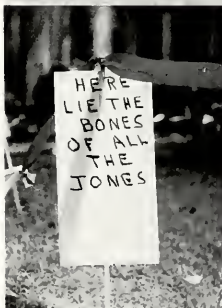




Just waiting for a taxi . . .
 She reigns o'er all . . . Don't
 yell so loud, Cornelia . . .
 The very essence of spring
 . . . May Day, in all its glory
 . . . Mother to us all . . .
 Still May Day, even more
 beautiful . . . Not being
 snooty? . . . Horses!



SENIOR-SENIOR-MIDDLE DAY



And they did!
 . . . Three of the
 heartier rooters
 . . . One of the
 tombstones . . .
 The victor and
 Courtney . . . Sen-
 ior Parade . . . So
 this is Senior-
 Senior-Middle
 Day!

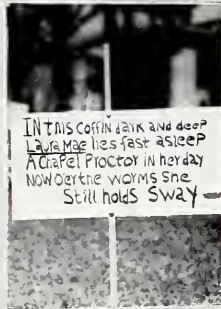


1936

SENIOR-SENIOR-MIDDLE DAY



Senior-Mid Parade, and what a one! . . . This time they were wrong . . . The wedding — oh, well, it's just the Senior-Mids . . . A Senior-Mid's epitaph . . . They challenged the Seniors . . . You'd think that it was Christmas!



1936

SENIOR-SENIOR-MIDDLE BANQUET



*Come, wander down the paths of memory
In this, the garden of remembered days.
The fresh blown blossoms of happy hours await
For you to gather ere they fade away.*

And with this invitation, the Seniors, with their Senior-Mid escorts, on March 12, entered the dining room transformed into a lovely garden, with a sparkling fountain's murmur blending with the music of Murray Harmon's orchestra, and "a host of golden daffodils" making the atmosphere one of spring and memory time.

Directed by the witticisms of Laura Mae Carpenter, toastmistress, the program was very brilliantly performed around the theme of the flower garden of memories. And the memory of the Senior-Senior-Middle banquet of '36 will be one of the most cherished memories of all.



1936

GEORGE WASHINGTON'S BIRTHDAY



LOUISE FOSGATE as MARTHA
ELIZABETH ROGERS as GEORGE

ANOTHER Ward-Belmont tradition that every girl loves and looks forward to is the Washington birthday dinner and ball. The spirit and gallantry of the old South invades Recreation Hall as the girls in their festive costumes come down the beautiful hanging staircases into the dining room. After the formal dinner, the Seniors go to the gym where they, in colorful colonial costumes, dance the graceful minuet. It is in this way that the Ward-Belmont girls show their love and loyalty to George Washington.



SENIORS DANCING THE MINUET

1936

MAY DAY

MAY DAY is another one of the festive occasions observed by Ward-Belmont. The first nice Saturday of May is chosen for the celebration. The Queen of the day is chosen from the Senior Class and is attended by two other girls. One called College Maid is from either the Senior or the Senior-Middle Class; the other is known as the Prep Maid and is elected from one of the High School groups. The rest of the student body participates in one or two of the dances for the entertainment of the Queen and her court of Senior girls. Every club has its own Maypole around which a dance is performed to conclude the festivities of the day.



BERNICE SCHILL
College Maid



SHIRLEY LEAKE
Prep Maid

1936



FRANCES PRINCE
May Queen

1936

A - B - C
C O N T E S T



A-Athletic
WINNIE COFFEE



B-Beautiful
BERNICE SCHILL



C-Clever
LOUISE MATHEWS



D-Democratic
MARGARET GREENE



E-Eloquent
ANNA MARY PIERCE



F-Fashionable
ELLEN BOWERS



G-Gifted
GRACE BENEDICT



H-Humorous
CONNIE CHASE



I-Intellectual
JEAN BURK

1936

A - B - C
C O N T E S T



S-Surely
ELIZABETH RUDOLPH



K-Kind
MARY DONNAN WILSON



L-Likeable
BILLIE FRANK SMITH



M-Meek
ELIZA MONK



N-Natural
BARBARA LEAKE



O-Original
VIRGINIA WHITE



P-Popular
MOSELLE WORSLEY



Q-Queenly
FRANCES PRINCE



R-Reserved
MARTHA ELLEN HIGLER

1936

A - B - C
C O N T E S T



S - Sincere
HELEN JONES



T - Temperamental
JUNE WEEKS



U - Unusual
ELIZABETH ROGERS



V - Versatile
JEANNE COOKSON



W - Winsome
JOAN JOBSON



X - Executive
EMILY HAMILTON



Y - Youthful
GLEE CALLAWAY



Z - Zealous
VIRGINIA HARDESTY



**A - B - C
E N S E M B L E**



EDWINE SCHMID




MOCK A. B. C.

A -awkward	GRACE BENEDICT
B -bashful	EDWINE SCHMID
C -collegiate	MARGARETMONROE YAGER
D -doubtful	HYPHEN HUMOR
E -empty-headed	RUTH JONES
F -fickle	BELLS OF WARD-BELMONT
G -grouchy	"WHOOPA" CORNELIUS
H -horsey	"FEE" COE
I -irritating	WHITTAKER
J -jumpy	MISS SISSON
K -kissable	WHO KNOWS?
L -languishing	RACHAEL BRAUER
M -masculine	ELIZABETH RUDOLPH
N -nuisance	SIGNING OUT
O -obnoxious	CINNAMON ROLLS
P -precious	RESTRICTED CAMPUS
Q -quiet	JANE JACKSON
R -rational	EXAM WEEK
S -safeguarded	ALL OF US
T -tantalizing	MAILBOXES
U -unbalanced	PAULINE MYERS
V -vacant	MISS MORRISON
W -winsome	JANE ALLISON
X -x-otic	ELIZA MONK
Z -zipping	BILLIE FRANK SMITH



Organizations





Social Clubs



THE SOCIAL CLUBS



WHEN the new girls arrive at Ward-Belmont, they are rushed by all of the fourteen social clubs; and within three weeks each girl has been taken into one of them.

The club as an organization provides a place for every girl to have some responsibility within the smaller unit. It's the cradle of everlasting friendship, and many hours of carefree happiness are spent within the houses.





BETTIE JAYNE REED
President



MISS GERTRUDE CASEBIER
Sponsor

AGORA CLUB

Officers

<i>President</i>	BETTIE JAYNE REED
<i>Vice President</i>	RUTH JONES
<i>Secretary</i>	RUIE OSMUNDSON
<i>Treasurer</i>	ANNIE LOU WALL
<i>Sergeant-at-Arms</i>	HELEN HORTON



MARGARET BARTON, JANE BERGER, ROSE CAROLINE BLOCK, BARBARA BROWN
MINNIE WOODS CARROLL, WINNIE COFFEE, DORRIS COLE, MARY LESLIE COOK
LILLIAN CROWDER, EMALOU FLOREY, LOIS JEAN FLOYD, MARGARET HALL
CLARA LEE HELBING, ELIZABETH ANN HOFFMAN, HELEN HORTON, RUTH JONES



ROYENA KIPP, MARY McGEHEE, RUIE OSMUNDSON, JEAN PEARSON
EVELYN PHILLIPS, FRANCES RIEDY, PHYLLIS SCHACKNE, ANNELLE SMITH
LUCILLE SMITH, MURIEL SOMATT, MARY SUDHOFF, CELESTE JANE THROCKMORTON
ANTOINETTE TULL, RUTH MARGARET VOIGT, ANNIE LOU WALL





MARY ANN FOLEY
President



MISS LINDA RHEA
Sponsor

A. K. CLUB

Officers

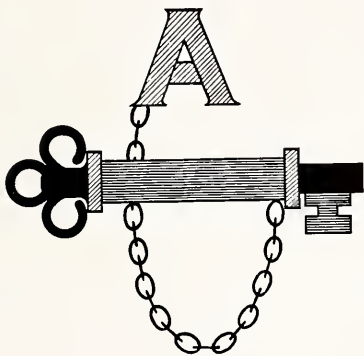
<i>President</i>	MARY ANN FOLEY
<i>Vice President</i>	MARY PAULINE BUTLER
<i>Secretary</i>	JOAN BUTTERFIELD
<i>Treasurer</i>	LEORA HILL
<i>Sergeant-at-Arms</i>	MARTHA MERRYDAY



PHYLLIS BRINE, MARY PAULINE BUTLER, JOAN BUTTERFIELD, NORVELL COX
BETTY LOU DAILEY, CONNIE DE FUNIAK, IRENE DIETZEN, PHYLLIS ESPOVITCH
LEORA HILL, MARY HINES JACKSON, PATRICIA JAMESON, BETSY JONES
POLLY KNEHR, JANE LUDWIG, MARTHA MERRYDAY, MARTHA MORRISON



MARY JANE OLSON, IDA PHILLIPS, VIRGINIA ROBERSON, BERNICE SCHILL
ALLIE SEDWITZ, BARBARA SMITH, JANE SUITER, ELIZABETH TIPTON
JUNE VERNON, CHARLOTTE WANEK, JEAN WEBSTER, MARY VIRGINIA WREN
No Picture: ELIZABETH SLADE





PAULINE MYERS
President



MISS MARGARET LOOFT
Sponsor

ANTI-PANDORA CLUB

Officers

<i>President</i>	PAULINE MYERS
<i>Vice President</i>	MAMIE JONES
<i>Secretary</i>	GENE MOORE
<i>Treasurer</i>	JANA LONGNECKER
<i>Sergeant-at-Arms</i>	MARJORIE CRUME



VIRGINIA BATTLE, MARY DOROTHY BLALOCK, MARY HAMILTON BRACKEN, ANNE BROWNING
MARTHA BROWNING, MARY BYRNE, RUTH CARR, MARGARET CARRIGAN
MARTHA CARSON, MARJORIE CRUME, JANE EDGERLY, JANE FLANNIGAN
CHARLOTTE FOGG, BETTY JANE GALT, MIRIAM HARWELL, PATTIE HOWELL



AUDREY JONES, MAMIE JONES, VIRGINIA KOELKER, BARBARA LEAKE
JANA LONGNECKER, MARY SYD MEDEARIS, FELECIA MONGONE, GENE MOORE
YVONNE NORMAN, EDRIE OLLIVER, MARGARET OZEE, MARGARETE ELLEN PEEBLES
MARTHA ANN ROGERS, HARRIET SVE, VIRGINIA VARGA





SARAH ASHLEY
President



MISS KATHERINE LYDELL
Sponsor

DEL VERS CLUB

Officers

<i>President</i>	SARAH ASHLEY
<i>Vice President</i>	TEDDIE KRAUSS
<i>Secretary</i>	ELIZABETH DOTY
<i>Treasurer</i>	BETTY BURNS
<i>Sergeant-at-Arms</i>	GLEE CALLAWAY



DOROTHY ADDISON, JEAN BAILEY, JEAN BATEMAN, RACHAEL BRAUER
BETSY BURGESS, BETTY BURNS, CHARLENE BUTLER, GLEE CALLAWAY
BEVERLY CHESCHEIR, JANET COLLINGS, DORIS COOK, ELIZABETH DOTY
JANE ELLIOTT, MARJORIE GUNN, BARBARA JOBSON, JOAN JOBSON



TEDDIE KRAUSS, CHARLOTTE LEWIS, JEAN McEWAN, EVELYN NORTON
MARY POLLARD, NELLE JANE RANCK, BARBARA RENIGER, BLOSSOM ROARK
JEANNE ROLAND, SARAH SMALLWOOD, WHITFIELD STALLINGS, ITASCA STEWART
MARJORIE TREADWELL, JUNE WEEKS, JEANNE YANTES





ELIZABETH EVANS
President



MISS BERTHA RUEF
Sponsor

F. F. CLUB

Officers

<i>President</i>	ELIZABETH EVANS
<i>Vice President</i>	JUNE ERICKSON
<i>Secretary</i>	MAXINE GRAHAM
<i>Treasurer</i>	KATHARINE HAYS
<i>Sergeant-at-Arms</i>	DONNA HEASLEY



MARJORIE ASTON, MARY ROSE BOSTON, ALLIE LOU BRODERICK, MARY FRANCES BROWN
VIRGINIA COLLINS, JULIA COLVERT, DOROTHY ELLIOTT, JUNE ERICKSON
MAXINE GRAHAM, EULALIE HALLIBURTON, KATHERINE HAYS, DONNA HEASLEY
DOROTHY HELM, ROWENA LEE, JANE LINCOLN, MARJORIE LOTZ
Members not in picture: BEVERLY BARTON, MARY RUTH HAMILTON, ARLYCE KNIGHT



BETTY MARTIN, DORIS MEAD, ELAINE OSTERGARD, FRANKIE PATRICK
JEAN ROGERS, HARRIETT ROSENBLUM, ELOISE SOUTHARD, FRANCES STANLEY
SUE STICKNEY, ANNETTE STOUT, LUCILE WINGATE, MARGARETMONROE YAGER





LOUISE FOSGATE
President



MISS MARY DOUTHIT
Sponsor

OSIRON CLUB

Officers

<i>President</i>	LOUISE FOSGATE
<i>Vice President</i>	MARY GRISWOLD
<i>Secretary</i>	DOROTHY MARTIN
<i>Treasurer</i>	HELEN TIBBETS
<i>Sergeant-at-Arms</i>	ELLOIE JETER



JANE BACHAUSEN, MARY BLINE, VIRGINIA BONNOT, MARGARET KEYES CLARK
ELIZABETH COE, MARION DOERRER, POLLY DU VERNET, JEANNE FAGERBERG
MARY GRISWOLD, RUTH HEWITT, FANNIE HINDMAN, BETTY JANE HOPEWELL
CHARLOTTE HOWARD, GENEVA JACOBS, ELLOIE JETER, HELEN JONES



JANE JONES, MARTHA ELLEN KIGER, FRANCES LAVAL, JEAN LAY
EFFIE BESS McNAMEE, DOROTHY MARTIN, SALLY PAINE, MATTIE PALMER
CORINNE PEIRCE, KATHRYN PHILLIPS, ANNA JO SAINÉ, CARROLL SHEEP
VIRGINIA SHERMAN, HELEN TIBBETS, NANCY UHL, KATHLEEN WATTERS, VIRGINIA WHITE





JEANNE BRIGHAM
President



MISS BLANCHE HENRY CLARK
Sponsor

PENTA TAU CLUB

Officers

<i>President</i>	JEANNE BRIGHAM
<i>Vice President</i>	LOUISE MATHEWS
<i>Secretary</i>	MARGARET MITCHAM
<i>Treasurer</i>	VICKY PIERCE
<i>Sergeant-at-Arms</i>	JANE JACKSON



JANE ANGLIN, MARJORIE ASHCROFT, ELLA MARIE CAIN, JANE CALHOUN
SARAH ALICE CLAYTON, MURL COPELAND, JAYNE COYLE, BETTY DUNLAY
DOROTHY GARDNER, EMILY HAMILTON, NANCY HOVIS, JANE JACKSON
EVELYN MCCALL, NANCY MCGINNIS, LOUISE MATHEWS, REBA JUNE MERSFELDER



ANNA MAY MOUL, MARGARET MITCHAM, ANNA MARY PIERCE, VICKY PIERCE
RUTH PINKHAM, BEULAH PITTMAN, ELIZABETH RAUSCHENBERG, MARY NORMAN WEST
EDWINE SCHMID, FRANCES SHELBY, COURTNEY WHITE, ELEANOR WHITSON, GRACE WILLIS





FRANCES PRINCE
President



MISS BETTY O'DONNELL
Sponsor

TWENTIETH CENTURY CLUB

Officers

<i>President</i>	FRANCES PRINCE
<i>Vice President</i>	MARGARET PITCHER
<i>Secretary</i>	VIRGINIA HARDESTY
<i>Treasurer</i>	HELEN HALL
<i>Sergeant-at-Arms</i>	MARTHA ROTH



JEANNE BRADY, MARY ELIZABETH BROWN, LAWRECE BUTLER, KATHERINE BUTTS
MILDRED COX, SARAH EVERETT, ELIZABETH FAWCETT, EVELYN FRAZIER
MARY FRAZIER, JULIA GERY, GENE GILL, MARY JAC GRIFFITH
HELEN HALL, ELIZABETH HARDESTY, VIRGINIA HARDESTY, LOUISE KASPAR



DOROTHY LEHRER, HELEN McKEOGH, JANE MEYER
VIRGINIA NISBITT, AGNES ORMOND, KATHARINE PEARCE, MARGARET PIDCOCK
MARGARET PITCHER, MARGARET ANNE RHODES, MARTHA ROTH, JUANITA STEWART





PATSY SCHORNDORFER
President



MISS CATHERINE MORRISON
Sponsor

TRI K CLUB

Officers

<i>President</i>	PATSY SCHORNDORFER
<i>Vice President</i>	MOSELLE WORSLEY
<i>Secretary</i>	VIRGINIA BARRET
<i>Treasurer</i>	ELIZABETH SIEGMUND
<i>Sergeant-at-Arms</i>	BETTY CARLISLE



JANE ALLISON, PEGGY ARMISTEAD, VIRGINIA BARRET, LOUISE BAXTER
BETTY CARLISLE, LAURA MAE CARPENTER, JEANNE COOKSON, MARGARET COOPER
JANE CURFMAN, SARA ELLIOTT, MARY ANN FRISTOE, DOROTHY JAEGER
PAULINE KAISER, SARA JANE KIMMELL, BEVERLY LACK, LEDLIE LOGAN



IONE MCKNIGHT, JANE MERRICK, BARBARA MOORE
GENEVIEVE MULLINS, JANET PASCOE, ELIZABETH ROGERS, ELIZABETH SIEGMUND
MARGARET THROWER, ANNE TURNER, MARION WEBER, LOIS WHITEMAN
BOBBIE WILLIAMS, MARY DONNAN WILSON, MOSELLE WORSLEY





ELIZABETH RUDOLPH
President



MISS MARION MERIWETHER
Sponsor

X. L. CLUB

Officers

<i>President</i>	ELIZABETH RUDOLPH
<i>Vice President</i>	MILDRED SARTOR
<i>Secretary</i>	SHAWNEE ELLIOTT
<i>Treasurer</i>	MARY BETH CATON
<i>Sergeant-at-Arms</i>	PORTIA PHILLIPS



HELEN AYCOCK, MARGARET BAKER, LETITIA BREESE, VIRGINIA BROWN
PHYLLIS CARR, MARY BETH CATON, CONSTANCE CHASE, CATHERINE CHEATHAM
SHAWNEE ELLIOTT, ROSELLE EMERY, MARGUERITE GRAVES, JUSTINE JAMES
MARION KEMP, MARY FRANCES LAUNIUS, VIOLET MADDOX, GENEVIEVE MARSH



ELIZABETH MASTIN, MINNIE MAUD MAY
ELIZA MONK, FLORENCE MONK, PORTIA PHILLIPS, VIRGINIA PIPER
ANNE RUDOLPH, ELSIE SANTE, MILDRED SARTOR, BILLIE FRANK SMITH
PATTY SMITH, PEGGY SMITH, CAROLYN WILLIAMS





EVELYN BRADEN
President



MISS HELEN GRIZZARD
Sponsor

ANGKOR CLUB

Officers

<i>President</i>	EVELYN BRADEN
<i>Vice President</i>	MARTHA GREENE
<i>Secretary</i>	LILLIAN WALTERS
<i>Treasurer</i>	JEAN BURK
<i>Sergeant-at-Arms</i>	ELIZABETH CORNELIUS



GRACE BENEDICT, ELLEN BOWERS, BARBARA LEE BROWN, MARTHA BRYAN, JEAN BURK
SUSAN CHEEK, ELIZABETH CORNELIUS, JANE GREY CORNELIUS, MARTHA CRAIG,
DOROTHY COLMERY
MAE E. CUDE, JANE MERIWETHER DAVIS, LOUISE DOUGLAS, MARY ALENE EDWARDS,
JEAN FLEMING
ANN GANIER, JEANNE GIBSON, MATILDA GIBSON, LAURA GRAHAM, MARGARET GREENE



MARTHA GREENE, CORINNE HOWELL, ELIZABETH HOWELL, ANNE HUDDLESTON
RUTH KING, VIRGINIA MCCLELLAN, PEGGY MCNEILL, MICKIE PERRY
DOROTHY PROCTOR, ELIZABETH RAGLAND, ADELAIDE ROBERTS, CHARLOTTE ROBINSON,
ANN STAHLMAN
ALICE THOMPSON, JANE VANCE, PEGGY VAUGHN, LILLIAN WALTERS, PEGGY WRIGHT





REBECCA RICE
President



MISS NELLE MAJOR
Sponsor

ARISTON CLUB

Officers

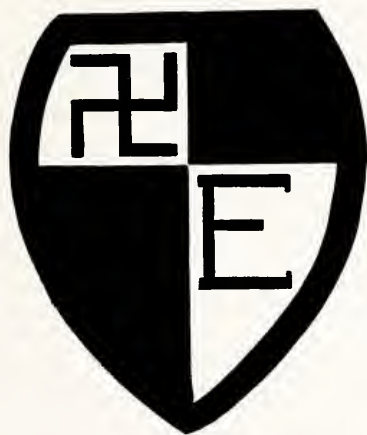
<i>President</i>	REBECCA RICE
<i>Vice President</i>	DOROTHY EVANS
<i>Secretary</i>	ELIZABETH NOE
<i>Treasurer</i>	DIANA RICHMOND
<i>Sergeant-at-Arms</i>	CARMENCITA TORREY



VIRGINIA ARCHER, ESTHER HELEN AZARCH, MARY MAXINE BOZEMAN, MARTHA EARTHMAN
DOROTHY EVANS, MARY ELIZABETH HENLEY, MARY EVELYN JENSEN, HULDAH ANN KNOPP
ROBERTA LUKER, MARGARET MILLSPAUGH, ELIZABETH MURPHREE, ELIZABETH NOE



MARGARET NOLAND, BETTY ROBERSON, LOUISE TIMBERMAN
EDITH ROBERTSON, ELISE SHEFFIELD, CARMENCITA TORREY, SARAH WELLS
HARRIET WILLIAMS, RUTH WILLIS, LOUISE WINDROW





JULIETTE CRAIG
President



MRS. ROBBIE A. SHACKLEFORD
Sponsor

ECCOWASIN CLUB

Officers

<i>President</i>	JULIETTE CRAIG
<i>Vice President</i>	SHIRLEY LEAKE
<i>Secretary</i>	JEAN EWING
<i>Treasurer</i>	MARGARET GLASGOW
<i>Sergeant-at-Arms</i>	JANE MEACHAM



JEAN ANN ALLEN, JANE BAGLEY, FRANCES BRATTON, SHELLY CABELL
FRANCES CARTER, PEGGY DICKINSON, JEAN EWING, CORNELIA FORT
MARGARET GILES, ANN CAROLINE GILLESPIE, MARY WILSON GILLESPIE, MARGARET GLASGOW



SARAH GOODPASTURE, LLEWELLYNA GRANBERY, VIRGINIA LOVE GRAVES, ELAINE HAILE
RUTH HOPKINSON, SHIRLEY LEAKE, JANE MEADORS, MARY MOREL
HENRIETTA RUTH, BETTY RYE, JEAN WETTERAU, FRANCES WILKERSON





MARION LATA
President



MISS MARTHA ORDWAY
Sponsor

TRIAD CLUB

Officers

- President* MARION LATA
Vice President MARY ALICE HERBERT
Secretary LUCILE JOHNSON
Treasurer MARY BENSON
Sergeant-at-Arms PEGGY WRENNE



MARtha ARMISTEAD, MARY BENSON, MABEL JUSTICE BLACKMAN, ELIZABETH BLEDSOE
LUCIE JEAN BROWN, BETTY CAPPS, DARTHA CARVER, MARtha ANNE COONEY
JANE DAVIS, ANN MILDRED FIGGINS, FLORENCE GABRIEL, MARY ALICE HERBERT



ELVA HOLLINS, LUCILE JOHNSON, DOROTHY KING, ELLEN MARTIN
CECILIA NUCHOLS, MILDRED PARKER, EMILY PAYNE, DOROTHY STRICKLAND
ELIZABETH PINNER, LILLIAN SHACKLETT, LA ZELLE SWENSSON, MARY TARPLEY
SUE BAYLOR TRULOCK, MARGARET WHITE, PEGGY WRENNE



INDEX OF INDIVIDUAL PICTURES

	PAGE		PAGE
ADDISON, DOROTHY.....	117	CAPPS, BETTY.....	157
ALLEN, JEAN ANN.....	39, 153	CARLISLE, BETTY.....	19, 40, 62, 64, 137
ALLISON, JANE.....	70, 137	CARPENTER, LAURA MAE.....	18, 53, 57, 137
ANGLIN, JANE.....	129	CARR, PHYLLIS.....	24, 36, 61, 64, 141
ARCHER, VIRGINIA.....	149	CARR, RUTH.....	22, 36, 113
ARMISTEAD, MARTHA.....	39, 157	CARRIGAN, MARGARET.....	53, 113
ARMISTEAD, PEGGY.....	137	CARROLL, MINNIE WOODS.....	105
ASHCROFT, MARJORIE.....	129	CARSON, MARTHA.....	24, 61, 113
ASHLEY, SARAH.....	23, 70, 116	CARTER, FRANCES.....	50, 153
ASTON, MARJORIE.....	121	CARVER, DOROTHA.....	157
AYCOCK, HELEN.....	141	CATON, MARY BETH.....	24, 61, 141
AZARCH, ESTHER HELEN.....	39, 149	CHADWELL, PATTY.....	76
BACHAUSEN, JANE.....	125	CHASE, CONSTANCE.....	24, 69, 96, 141
BAGLEY, JANE.....	153	CHEATHAM, CATHERINE.....	141
BAILEY, JEAN.....	23, 36, 52, 117	CHEEK, SUSAN.....	49, 145
BAKER, MARGARET.....	141	CHESCHIER, BEVERLY.....	117
BARRET, VIRGINIA.....	39, 62, 137	CLARK, MARGARET KEYES.....	53, 62, 125
BARTON, MARGARET.....	23, 105	CLAYTON, SARAH ALICE.....	36, 129
BATEMAN, JEAN.....	39, 117	COE, ELIZABETH.....	61, 125
BATTLE, VIRGINIA.....	57, 113	COFFEE, WINNIE.....	24, 53, 61, 62, 68, 76, 96, 105
BAXTER, LOUISE.....	53, 58, 62, 137	COLE, CARROLL.....	62
BENEDICT, GRACE.....	38, 62, 68, 71, 73, 76, 96, 145	COLE, DORRIS.....	105
BENSON, MARY.....	39, 157	COLLINGS, JANET.....	64, 117
BERGER, JANE.....	23, 61, 105	COLLINS, VIRGINIA.....	121
BLACKMAN, MABEL.....	157	COLMERY, DOROTHY.....	20, 24, 145
BLACKLOCK, DOROTHY.....	113	COLVERT, JULIA.....	64, 121
BLEDSOE, ELIZABETH.....	157	COOK, DORIS.....	117
BLINE, MARY.....	125	COOK, MARY.....	24, 61, 105
BLOCK, ROSE CAROLYN.....	105	COOKSON, JEANNE.....	18, 40, 69, 71, 73, 74, 98, 137
BONNOT, VIRGINIA.....	125	COONEY, MARTHA ANNE.....	157
BOSTON, MARY ROSE.....	61, 64, 121	COOPER, MARGARET.....	137
BOWERS, ELLEN.....	23, 54, 61, 69, 74, 96, 145	COPELAND, MURL.....	129
BOZEMAN, MARY MAXINE.....	149	CORNELIUS, ELIZABETH.....	22, 61, 69, 75, 145
BRACKEN, MARY HAMILTON.....	58, 113	CORNELIUS, JANE.....	145
BRADEN, EVELYN.....	22, 61, 144	COX, MILDRED.....	40, 133
BRADY, JEANNE.....	133	COX, NORVELL.....	109
BRATTON, FRANCES.....	23, 153	COYLE, JAYNE.....	129
BRAUER, RACHAEL.....	72, 117	CRAIG, JULIETTE.....	25, 152
BREESE, LETITIA.....	61, 141	CRAIG, MARTHA.....	25, 145
BRIGHAM, JEANNE.....	23, 53, 61, 128	CROSSAN, CATHERINE.....	62
BRINE, PHYLLIS.....	109	CROWDER, LILLIAN.....	105
BRODERICK, ALLIE LOU.....	121	CRUME, MARJORIE.....	25, 36, 58, 113
BROWN, BARBARA.....	23, 64, 105	CUDE, MAE E.....	25, 145
BROWN, BARBARA LEE.....	145	CURFMAN, JANE.....	25, 137
BROWN, LUCY JEAN.....	157	DAILEY, BETTY LOU.....	109
BROWN, MARY ELIZABETH.....	133	DAVIS, JANE.....	40, 71, 157
BROWN, MARY FRANCES.....	121	DAVIS, JANE MERIWETHER.....	145
BROWN, VIRGINIA.....	141	DE FUNIAK, CONNIE.....	40, 109
BROWNING, ANNE.....	53, 113	DICKINSON, PEGGY.....	20, 40, 153
BROWNING, MARTHA.....	113	DIETZEN, IRENE.....	109
BRYAN, MARTHA.....	145	DOERRER, MARION.....	19, 125
BURGESS, BETSY.....	61, 117	DOTY, ELIZABETH.....	117
BURK, JEAN.....	53, 62, 71, 96, 145	DOUGLAS, LOUISE.....	25, 53, 61, 145
BURNS, BETTY.....	24, 34, 52, 117	DRISKILL, MARCELLA.....	40, 71
BUTLER, CHARLENE.....	117	DUNLAY, BETTY.....	129
BUTLER, LAWRECE.....	49, 62, 133	DUVERNET, POLLY.....	125
BUTLER, PAULINE.....	74, 109	EARTHMAN, MARTHA.....	149
BUTTERFIELD, JOAN.....	39, 109	EDGERLY, JANE.....	53, 62, 113
BUTTS, KATHERINE.....	133	EDWARDS, NELLE.....	62
BYRNE, MARY.....	19, 113	EDWARDS, MARY ALENE.....	50, 145
CABELL, SHELLLEY.....	153	ELLIOTT, DOROTHY.....	121
CAIN, ELLA MARIE.....	64, 129	ELLIOTT, JANE.....	117
CALHOUN, JANE.....	129	ELLIOTT, SARA.....	137
CALLAWAY, GLEE.....	39, 98, 117	ELLIOTT, WINIFRED.....	141



	PAGE		PAGE
EMERY, ROZELLE.....	25, 36, 58, 64,	HORTON, HELEN.....	105
ERICKSON, JEAN.....	121	HOVIS, NANCY.....	129
ESPOVITCH, PHYLLIS.....	109	HOWARD, CHARLOTTE.....	125
EVANS, DOROTHY.....	149	HOWELL, CORINNE.....	146
EVANS, ELIZABETH.....	25, 36, 64,	HOWELL, ELIZABETH.....	146
EVERTT, SARA.....	40, 73,	HOWELL, PATTY.....	28, 53, 54, 113
EWING, JEAN.....	41, 153	HUDDLESTON, ANNE.....	48, 146
FAGERBERG, JEANNE.....	125	IRWIN, ELEANOR.....	76
FAWCETT, ELIZABETH.....	26, 61,	JACKSON, JANE.....	129
FIGGINS, ANN MILDRED.....	157	JACKSON, MARY HINES.....	109
FLANNIGAN, JANE.....	26, 57, 64,	JACOBS, GENEVA.....	125
FLEMING, JEAN.....	145	JAEGER, DOROTHY.....	18, 28, 36, 60, 64, 69, 137
FLOREY, EMALOU.....	26, 36, 61, 64, 68, 72,	JAMES, JUSTINE.....	141
FLOYD, LOIS JEAN.....	105	JAMISON, PATRICIA.....	109
FOGG, CHARLOTTE.....	113	JENSEN, MARY EVELYN.....	54, 64, 149
FOLEY, MARY ANN.....	26, 108	JETER, ELLOIE.....	62, 125
FORT, CORNELIA.....	41, 62,	JOBSON, BARBARA.....	117
FOSGATE, LOUISE.....	26, 93,	JOBSON, JOAN.....	98, 117
FRAZER, EVELYN.....	133	JOHNSON, LUCILE.....	42, 71, 158
FRAZER, MARY.....	133	JONES, AUDREY.....	114
FRISTOE, MARY ANN.....	19, 137	JONES, BETSY.....	19, 28, 36, 109
GABRIEL, FLORENCE.....	157	JONES, HELEN.....	18, 28, 72, 98, 125
GALT, BETTY JANE.....	113	JONES, JANE.....	126
GANIER, ANN.....	50, 145	JONES, MAMIE.....	28, 58, 114
GARDNER, DOROTHY.....	129	JONES, RUTH.....	28, 105
GERY, JULIA.....	60, 133	KAISER, PAULINE.....	42, 137
GIBSON, JEANNE.....	145	KASPAR, LOUISE.....	60, 133
GIBSON, MATILDA.....	41, 145	KEMP, MARION.....	28, 36, 61, 64, 141
GILES, MARGARET.....	48, 153	KING, MARTHA ELLEN.....	28, 54, 61, 97, 126
GILL, GENE.....	64, 133	KIMMEL, SARA JANE.....	70, 137
GILLESPIE, ANN CAROLYN.....	62, 71, 153	KING, DOROTHY.....	158
GILLESPIE, MARY WILSON.....	26, 53	KING, RUTH MARIE.....	146
GLASGOW, KEITH.....	71, 73	KIPP, ROYENA.....	29, 36, 61, 106
GLASGOW, MARGARET.....	20, 41, 153	KNEHR, POLLY.....	109
GOODPASTURE, SARAH.....	41, 154	KNOPP, HULDAH.....	149
GRAHAM, LAURA.....	41, 145	KOELKER, VIRGINIA.....	42, 114
GRAHAM, MAXINE.....	26, 30, 121	KRAUSS, TEDDIE.....	29, 36, 58, 118
GRANBERY, LLEWELYN.....	49, 62, 71, 73, 154	LACK, BEVERLY.....	18, 53, 64, 137
GRAVES, MARGUERITE.....	64, 141	LATTI, MARION.....	42, 156
GRAVES, VIRGINIA LOVE.....	154	LAUNIUS, MARY FRANCES.....	29, 141
GREENE, MARGARET.....	26, 52, 96,	LAVAL, FRANCES.....	29, 70, 126
GREENE, MARTHA.....	41, 71, 146	LAY, JEAN.....	126
GREENE, MARY JAC.....	41, 133	LEAKE, BARBARA.....	38, 54, 62, 97, 114
GRIFFITH, MARY JAC.....	53, 61, 72,	LEAKE, SHIRLEY.....	38, 94, 154
GRISWOLD, MARY.....	125	LEE, ROWENA.....	121
GUNN, MARJORIE.....	117	LEHRER, DOROTHY.....	134
HAILE, ELAINE.....	62, 154	LEWIS, CHARLOTTE.....	64, 118
HALL, HELEN.....	27, 61,	LINGOLN, JANIE.....	121
HALL, MARGARET.....	105	LOGAN, LEDLIE.....	137
HALLIBURTON, EULALIE.....	121	LONGNECKER, JANA.....	29, 61, 114
HAMILTON, EMILY.....	48, 98,	LOTZ, MARJORIE.....	60, 121
HARDESTY, ELIZABETH.....	27, 133	LUDWIG, JANE.....	19, 29, 36, 109
HARDESTY, VIRGINIA.....	27, 61, 98,	LUKER, ROBERTA.....	61, 149
HARWELL, MIRIAM.....	36, 113	MC CALL, EVELYN.....	29, 57, 129
HAYS, KATHERINE.....	27, 121	McCLELLAN, VIRGINIA.....	146
HEASLEY, DONNA.....	64, 121	McEWAN, JEAN.....	29, 53, 118
HELBING, CLARA LEE.....	64, 105	McGEEHEE, MARY.....	106
HELM, DOROTHY.....	121	McGINNIS, NANCY.....	129
HENLEY, MARY ELIZABETH.....	149	McKEOGH, HELEN.....	134
HERBERT, MARY ALICE.....	20, 157	McKNIGHT, IONE.....	42, 138
HEWITT, RUTH.....	27, 76,	McNAMEE, EFFIE BESS.....	126
HILL, LEORA.....	27, 58, 69,	McNEILL, PEGGY.....	146
HINDMAN, FANNIE.....	27, 125	MADDOX, VIOLET.....	30, 141
HOFFMAN, ELIZABETH ANN.....	105		
HOLLINS, ELYA.....	158		
HOPEWELL, BETTY JANE.....	53, 125		
HOPKINSON, RUTH.....	20, 27, 154		

	PAGE
MARSH, GENEVIEVE.....	62, 141
MARTIN, BETTY.....	122
MARTIN, DOROTHY.....	48, 126
MARTIN, ELLEN.....	42, 158
MASTIN, ELIZABETH.....	30, 36, 64, 142
MATHEWS, LOUISE.....	48, 62, 96, 129
MAY, MINNIE MAUD.....	57, 142
MEAD, DORIS.....	42, 122
MEADORS, JANE.....	42, 154
MEDEARIS, MARY SYD.....	114
MERRICK, JANE.....	138
MERRYDAY, MARTHA.....	30, 58, 109
MERSFELDER, REBA JUNE.....	61, 129
MEYER, JANE.....	30, 36, 53, 61, 68, 134
MILLSPAUGH, MARGARET.....	149
MITCHAM, MARGARET.....	130
MONGONE, FELICIA.....	53, 114
MONK, ELIZA.....	30, 97, 142
MONK, FLORENCE.....	142
MOORE, BARBARA.....	19, 138
MOORE, VELMA GENE.....	114
MOREL, MARY.....	43, 154
MORRISON, MARTHA LOUISE.....	109
MOUL, ANNA MAY.....	53, 54, 64, 130
MULLINS, GENEVIEVE.....	138
MURPHREE, ELIZABETH.....	149
MYERS, PAULINE.....	30, 112
NEIL, JOSEPHINE.....	61
NISBETT, VIRGINIA.....	134
NOE, ELIZABETH.....	30, 149
NOLAND, MARGARET.....	62, 150
NORMAN, YVONNE.....	114
NORTON, EVELYN.....	30, 118
NUCHOLS, CECILIA JANE.....	158
OLLIVER, EDRIE.....	114
OLSON, MARY JANE.....	110
ORMOND, AGNES.....	43, 134
OSMUNDSON, RUIE.....	64, 106
OSTERGARD, ELAINE.....	43, 122
OZEE, MARGARET.....	54, 114
PAINÉ, SALLY.....	126
PALMER, MATTIE.....	126
PARKER, MILDRED.....	31, 61, 158
PASCOE, JANET.....	31, 68, 70, 72, 138
PATRICK, FRANKIE.....	43, 62, 71, 73, 122
PAYNE, EMILY.....	43, 158
PEARCE, KATHERINE.....	43, 134
PEARSON, JEAN.....	106
PEEBLES, MARGARETE ELLEN.....	36, 61, 114
PEIRCE, CORINNE.....	126
PERRY, MICKIE.....	43, 62, 146
PHILLIPS, EVELYN.....	106
PHILLIPS, IDA.....	110
PHILLIPS, KATHRYN.....	61, 64, 126
PHILLIPS, PORTIA.....	142
PIDCOCK, MARGARET.....	134
PIERCE, ANNA MARY.....	96, 130
PIERCE, VICKIE.....	130
PINKHAM, RUTH.....	58, 130
PINNER, ELIZABETH.....	158
PIPER, VIRGINIA.....	57, 58, 142
PITCHER, MARGARET.....	43, 134
PITTMAN, BEULAH.....	130
POLLARD, MARY.....	61, 118
PRINCE, FRANCES.....	31, 95, 97, 132
PROCTOR, DOROTHY.....	49, 62, 146

	PAGE
RAGLAND, ELIZABETH.....	146
RANCK, NELLE JANE.....	22, 64, 118
RAUSCHENBERG, ELIZABETH.....	130
REED, BETTIE JAYNE.....	31, 36, 64, 104
REINIGER, BARBARA.....	44, 118
REHODES, MARGARET ANNE.....	134
RICE, REBECCA.....	31, 148
RIFEY, FRANCES.....	44, 62, 106
ROARK, BLOSSOM.....	118
ROBERSON, BETTY SUE.....	31, 62, 150
ROBERSON, VIRGINIA.....	110
ROBERTS, ADELAIDE.....	50, 146
ROBERTSON, EDITH.....	44, 150
ROBINSON, CHARLOTTE.....	146
ROGERS, ELIZABETH.....	31, 93, 98, 138
ROGERS, JEAN.....	122
ROGERS, MARTHA ANN.....	31, 64, 114
ROLAND, JEANNE.....	118
ROSENBLUM, HARRIETT.....	122
ROTH, MARTHA.....	50, 134
RUDOLPH, ANNE.....	61, 64, 142
RUDOLPH, ELIZABETH.....	32, 97, 140
RUTH, HENRIETTA.....	154
RYE, BETTY.....	38, 76, 154
SAINÉ, ANNA JO.....	126
SANTE, ELSIE ELEANOR.....	32, 36, 69, 142
SARTOR, MILDRED.....	32, 58, 69, 70, 142
SCHACKNE, PHYLLIS.....	44, 106
SCHILL, BERNICE.....	94, 96, 110
SCHMID, EDWINE.....	22, 61, 99, 130
SCHORNDORFER, PATSY.....	32, 61, 136
SEDWITZ, ALLIE.....	44, 110
SHACKLETT, LILLIAN.....	158
SHEEP, CARROLL.....	32, 36, 61, 64, 126
SHEFFIELD, ELISE.....	150
SHELBY, FRANCES.....	130
SHERMAN, VIRGINIA.....	126
SIEGMUND, ELIZABETH.....	32, 52, 61, 138
SMALLWOOD, SARAH.....	118
SMITH, ANNELLE.....	106
SMITH, BARBARA.....	44, 110
SMITH, BILLIE FRANK.....	18, 32, 97, 142
SMITH, LUCILLE.....	64, 106
SMITH, PATRICIA.....	142
SMITH, PEGGY.....	19, 142
SOMATT, MURIEL.....	44, 106
SOUTHARD, ELOISE.....	122
STAHLMAN, ANN.....	146
STALLINGS, WHITFIELD.....	19, 118
STANLEY, FRANCES.....	122
STEWART, ITASCA.....	118
STEWART, JUANITA.....	134
STICKNEY, SUE.....	44, 122
STOUT, ANNETTE.....	45, 122
STRICKLAND, DOROTHY.....	32, 158
SUDHOFF, MARY.....	33, 61, 106
SUITER, JANE.....	110
SVE, HARRIETT.....	114
SWENSSON, LAZELLE.....	158
TARPLEY, MARY.....	158
THOMPSON, ALICE.....	146
THROCKMORTON, CELESTE JANE.....	106
THROWER, MARGARET.....	138
TIBBETTS, HELEN.....	33, 36, 53, 126
TIMBERMAN, LOUISE.....	150
TIPTON, ELIZABETH.....	33, 60, 69, 110



	AGE	PAGE
TORREY, CARMENCITA.....	23, 150	WEST, MARY NORMAN..... 33, 36, 130
TREADWELL, MARJORIE.....	61, 118	WETTERAU, JEAN..... 154
TRULOCK, SUE BAYLOR.....	158	WHITE COURTNEY..... 64, 130
TULL, ANTOINETTE.....		WHITE, MARGARET W..... 45, 158
TURNER, ANNE.....	19, 23, 62, 138	WHI, VIRGINIA..... 61, 62, 97, 126
		WHITEMAN, LOIS..... 70, 138
UHL, NANCY.....	126	WHITSON, LAURA..... 61
		WHITSON, ELEANOR..... 34, 53, 61, 62, 130
VANCE, JANE.....	20, 6, 126	WILKERSON, FRANCES..... 20, 34, 154
VARGA, VIRGINIA.....	58, 114	WILLIAMS, CAROLYN..... 142
VAUGHN, PEGGY.....	146	WILLIAMS, HARRIETT ADELAIDE..... 45, 138
VERNON, JUNE.....	110	WILLIAMS, HARRIETT..... 150
VOIGT, RUTH-MARGARET.....	60, 106	W..... GRACE..... 130
		WILLIS, RUTH..... 150
WALL, ANNIE LOU.....	32, 36, 106	WILSON, MARY DONNAN..... 34, 58, 97, 138
WALLACE, MARGUERITE.....	74	WINDROW, LOUISE..... 150
WALTERS, LILLIAN.....	70	WING, LUCILE..... 122
WANER, CHARLOTTE.....	10	WING, MIOELLE..... 34, 54, 61, 70, 72, 97, 138
WATERS, KATHLEEN.....	126	WREN, MARY VIRGINIA..... 110
WEBER, MARION.....	18, 33, 61, 70, 138	WRENNE, PEGGY..... 70, 158
WEBSTER, JEAN.....	110	WRIGHT, MARGARET..... 146
WEEKS, JUNE.....	98, 118	YAGER, MARGARETMONROE..... 122
WELLS, SARAH ELIZABETH.....	45, 150	YANTES, JEANNE..... 118

Hall & Benedict



AETNA
INSURANCE
SERVICE



NASHVILLE TRUST BUILDING

Hermitage Laundry
and
Swiss Cleaners



Nashville's Largest and Best
Dry Cleaning Establishment



NASHVILLE, TENN.



PARCEL POST ORDERS
Given Prompt Attention

BAIRD-WARD PRINTING COMPANY

SPECIALIZING IN

PUBLICATIONS
CATALOGS
BOOKLETS

150 - 152 - 154 FOURTH AVENUE, NORTH
NASHVILLE, TENNESSEE



A PRINTING HOUSE
of
PROVEN SERVICE

YELLOW CAB CO.

Incorporated

YELLOW CABS, SIGHT-SEEING SEDANS, BROWN BAGGAGE
TRUCKS

Official Company for All Railroads and Leading Hotels

SEVEN-PASSENGER TOURING CARS FOR SIGHT-SEEING—
\$3.00 PER HOUR

Baggage Agents for Ward-Belmont—Special Attention Given Students
Baggage Checked Through to Destination Without Extra Charge

REDUCED CAB RATES


NO CHARGE FOR EXTRA PASSENGERS

PHONE 6-0101


CHEAPEST RATES

BURN

ST.
BERNARD
COAL



FROM OUR OWN
MINES DIRECT
TO THE
CONSUMERS
SINCE 1870



HOOPER LOVE, Manager

ST. BERNARD COAL COMPANY

PHONE 6-3101

21-23 ARCADE

NASHVILLE, TENN.

SILKS..COTTONS..LINENS

FLOOR COVERINGS
CURTAINS . . . SHADES
READY-TO-WEAR . . . ACCESSORIES

*Serving Nashville for More than
Fifty Years!*

H. J. GRIMES CO.

"Nashville's Busiest Dry Goods Store" 215 PUBLIC SQUARE

We Wish You a Nice
Vacation. Hurry Back.

•
COMPLIMENTS OF
DE LUXE
ICE CREAM CO.

•
Phone 6-0967
•

508 THIRD AVENUE, NORTH

IT'S DIFFERENT IT'S BETTER

COMPLIMENTS OF
Stumb Ice Cream
Company

FINE FROZEN
CONFECTIONS

•
PHONE 6-6679
•

717-719 Third Avenue, North
NASHVILLE, TENNESSEE

RAGLAND, POTTER & CO.
I N C O R P O R A T E D

Wholesale Grocers

CUMMINS STATION
NASHVILLE, TENNESSEE

Distributors of

Register of Merit Food Products

PHONE 5-4155

**Alloway
Brothers Co.**

Distributors of

MILK FED POULTRY
TABLE TEST EGGS
FANCY CREAMERY
BUTTER

150 Second Avenue, South
NASHVILLE, TENN.

Compliments
of

**BENSON
PRINTING
COMPANY**

If You Want First-Class . . .

M E A T

YOU CAN REST ASSURED
THAT WE HAVE IT

**Alex Warner
& Son**

STALL 17, MARKET HOUSE

Phone Us When You Want It Again

Phone 5-3139



**The Tennessee
Electric
Power Co.**

Extends Neighborly
Greetings to

WARD-BELMONT

And to All Students and
Former Students
Wherever They May Be

True-to-Pure
PASTEURIZED

THE FINEST YOU
CAN BUY

DAIRY PRODUCTS

Produced under the "Sealtest" System of Laboratory Protection—a system of laboratories formed by a group of leading dairy companies, and headed by famous scientists, to set and maintain the highest standards of



Purity . . . Cleanliness . . . Quality

NASHVILLE PURE MILK COMPANY

Phone 7-6501

ATTENTION!

RE-ORDERS FROM YOUR
NEGATIVE

Can Be Had at Any Time

AT GREATLY REDUCED
PRICES

Just Write Us

*

Schumacher Studio
FIFTH AT CHURCH STREET

Commercial Photograph Company

Makers of
QUALITY
PHOTOGRAPHS

For Advertising and
Personal Uses

Phone 6-0430

411½ Church Street

(Official Photographers)

NASHVILLE, TENN.

At Your Service

Good books of all publishers in stock,
or can be furnished promptly

History, Biography, Classics,
Bibles, Theology, Religion,
Travel, Adventure, Fiction

Fountain Pens, Pencils, Gift
Novelties

MAKE OUR STORE YOUR
HEADQUARTERS

●
**METHODIST
PUBLISHING HOUSE**

Whitmore & Smith, Agents
810 Broadway, Nashville, Tenn.

●
COMPLIMENTS OF

Merchants Ice Delivery Company

NASHVILLE, TENNESSEE

PHONE 6-0107

Prompt and Courteous
Service
●

R. T. OVERTON & SON

•
FRUITS AND
VEGETABLES
•

PHONE 6-2461
STALL 87 CITY MARKET

FISHOLOGY

Fish is health food,
Pure and simple—
Feeds the mind,
Brings out your dimple;

Should you angle after
School is out—
There's good fish yet
As e'er caught out.

Some of these are
Seashore fresh,
So fish for them
With larger mesh.

Anderson Fish and
Oyster Co.
THE BEST SEA FOODS

MUSIC SATCHELS
MUSIC ROLLS
MUSIC PAPER
METRONOMES
SAXOPHONES
STRINGS, CASES
AND TRIMMINGS
FOR ALL MUSICAL
INSTRUMENTS
PIANOS
ACCORDIONS

H. A. FRENCH

Dealer in
Sheet Music — Music Books

And All Kinds of

Musical Instruments

MUSICAL INSTRUMENTS
REPAIRED

Nashville, Tenn. 220 Sixth Ave., N.

VIOLINS
BANJOS
GUITARS
UKULELES
MANDOLINS
BRASS BAND
INSTRUMENTS
CLARIONETS
DRUMS, ETC.
RHYTHM BAND
INSTRUMENTS

HOTEL, RESTAURANT, CAFETERIA, COLLEGE, INSTITUTION
EQUIPMENT AND HOUSEFURNISHINGS
HOTEL CHINA AND GLASSWARE

McKAY-CAMERON COMPANY

"We Sell for Less"

214 THIRD AVENUE, NORTH

Phone 6-0427

NASHVILLE, TENNESSEE

SCHOOL
and
COLLEGE
ANNUAL
PUBLISHERS
PERSONAL
SERVICE
AND
CO-OPERATION

"The Modern Printers"

McQUIDDY
PRINTING & COMPANY

PRINTERS & PUBLISHERS

NASHVILLE ~ ~ TENNESSEE

